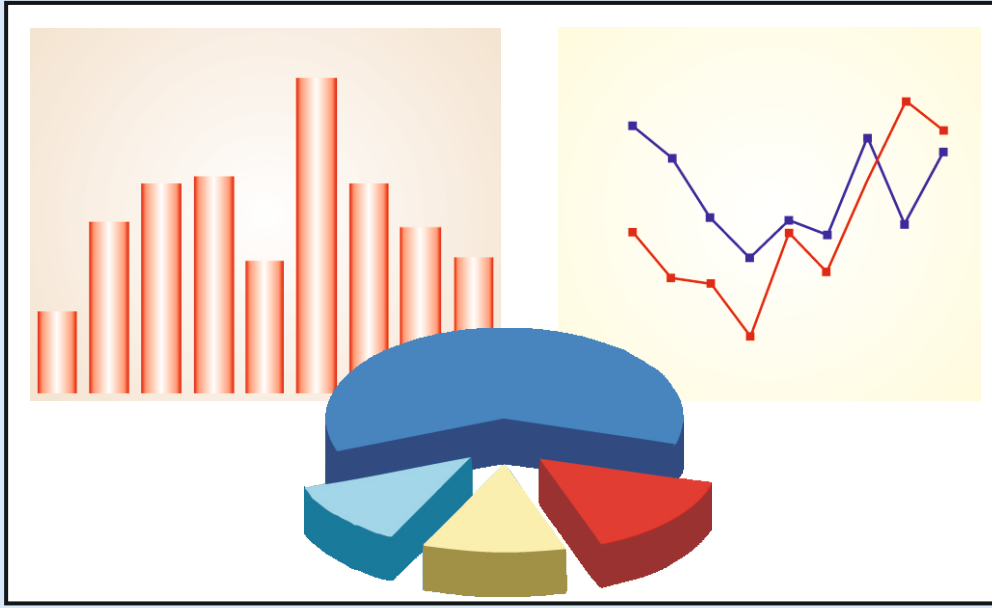




KUZEY KIBRIS TÜRK CUMHURİYETİ TURKISH REPUBLIC OF NORTHERN CYPRUS



EKONOMİK VE SOSYAL GÖSTERGELER ECONOMIC AND SOCIAL INDICATORS 2013

DEVLET PLANLAMA ÖRGÜTÜ
İZLEME VE KOORDINASYON DAİRESİ

STATE PLANNING ORGANIZATION
FOLLOW UP AND COORDINATION DEPARTMENT

KUZEY KIBRIS TÜRK CUMHURİYETİ
TURKISH REPUBLIC OF NORTHERN CYPRUS

**EKONOMİK VE SOSYAL
GÖSTERGELER**

ECONOMIC AND SOCIAL
INDICATORS

2013

DEVLET PLANLAMA ÖRGÜTÜ
İZLEME VE KOORDİNASYON DAİRESİ

STATE PLANNING ORGANIZATION
FOLLOW UP AND COORDINATION DEPARTMENT

Nisan 2015
April 2015

YAYIN VE BİLGİ İÇİN – FOR PUBLICATION AND INFORMATION



**Kuzey Kıbrıs Türk Cumhuriyeti
Devlet Planlama Örgütü
Lefkoşa**

+(392) – 228 31 41

+(392) – 228 59 88

Turkish Republic of Northern Cyprus
State Planning Organization
Lefkoşa
Mersin 10, TURKEY

Email : info.dpo@gov.ct.tr
Web: www.dpo.gov.ct.tr

KKTC Devlet Basımevi – Lefkoşa, Nisan 2015 – TRNC State Printing Office – Lefkoşa, April 2015

400 Adet Basılmıştır – Copies Issued 400

DPO-ESG -2013-19

ÖNSÖZ

Devlet Planlama Örgütü, 40 yıla yaklaşan bilgi birikimiyle KKTC'nin ekonomik, sosyal ve kültürel hedeflerine ulaşılması konusunda çalışmalar yürütmektedir. Devlet Planlama Örgütü'nün ürettiği resmi istatistikler, plan ve programlar yanında görev alanına giren diğer konularda çıkardığı yayınlar da bulunmaktadır.

1994 yılından itibaren her yıl yayınlanan "Ekonomik ve Sosyal Göstergeler" ülkemiz ekonomisiyle ilgili verileri sunmayı, ilgilenen kurum, kuruluş, araştırmacı ve öğrencilerin bu konudaki ihtiyaçlarını karşılamayı amaçlamaktadır.

"Ekonomik ve Sosyal Göstergeler 2013" Örgütümüzün yayını olup, 2003-2013 yılları arasındaki dönemi kapsamaktadır. Bu yayının içerisinde; Gayri Safi Milli Hasılda Sektörel Gelişmeler, Sektörel Katma Değerlerin Reel Büyüme Hızları, Gayri Safi Yurtiçi Hasılanın Dağılımı, Ekonominin Genel Dengesi, Kaynaklar-Harcamalar Dengesi, Yatırım-Tasarruf Dengesi, Sabit Sermaye Yatırımlarının Sektörel Dağılımı, Kamu Kesimi Genel Dengesi, Özel Kesim Genel Dengesi, Devlet Bütçe Dengesi, Banka Mevduatları, Banka Plasmanlarının Sektörel Dağılımı, Ödemeler Dengesi, Ülkeler İtibarıyla Dış Ticaret, Dışsatımın Yapısı, Ana Mal Grupları İtibarıyla Dışalım, Konaklama Tesisleri ve Yatak Kapasitelerinin Dağılımı, Turizm Sektöründe İstihdam Edilen Personel Sayısı, Eğitim Sektöründe Gelişmeler, KKTC'ndeki Üniversitelerde Okuyan Öğrencilerin Dağılımı, Sağlık Personeli, Tüketici Fiyatları Endeksi Değişim Oranları, Asgari Ücret Gelişmeleri, Akaryakıt Satışı, Yaratılan Katma Değere Göre İstihdam ve Hanehalkı İşgücü Anketine Göre İstihdam konularında bilgiler verilmektedir.

Devlet Planlama Örgütü tarafından yayınlanan bu kitabın hazırlanması için veri sağlayan ve katkı koyan tüm kurum, kuruluş ve personele teşekkür eder, tüm kullanıcılara faydalı olmasını dilerim.

Ödül Muhtaroğlu
Müsteşar

PREFACE

State Planning Organization, with nearly 40 years of accumulated knowledge, conducts regular works for TRNC economy to reach social and cultural goals. In addition to official statistics, plans and programs produced by State Planning Organization, there are publications published in other issues regarding its responsibility area also available.

"Economic and Social Indicators" which has been published annually since 1994, aims to provide data concerning our country's economy and to respond to the needs of institutions, researchers and students in that matter.

"Economic and Social Indicators for 2013" is our Organization's publication, which covers the period between the years of 2003-2013. Within this publication; Sectorial Developments in Gross National Product, Real Growth Rates of Sectorial Value Added, Sectorial Distribution of Gross Domestic Product, General Balance of the Economy, Balance of Resources and Expenditures, Balance of Investment and Savings, Sectorial Distribution of Fixed Capital Investments, General Balance of Public Sector, General Balance of Private Sector, Balance of State Budget, Bank Deposits, Sectorial Distribution of Bank Loans, Balance of Payments, Foreign Trade by Countries, Composition of Exports, Value of Imports by Commodity Groups, Distribution of Accommodation Establishments and Bed Capacities, Number of Employee in Tourism Sector, Developments in Education Sector, Students at the Universities in TRNC, Health Personnel, Consumer Price Index Change, Changes in Minimum Wage, Fuel Sales, Employment According to Value Added and Employment According to Household Labor Force Survey information is being given.

I would like to thank to all the institutions, organizations and staff which provided data and contributed to the preparation of this book published by State Planning Organization. I hope this publication will be useful to all users.

Ödül Muhtaroğlu
Undersecretary

Genel Not

1 Ocak 2005 tarihinden itibaren TL'den altı sıfır atılarak YTL'ye geçilmiştir. 2009 yılında YTL ve muadili ₺ birlikte tedavülde olmuştur. 1 Ocak 2010'dan itibaren YTL tedavülden kaldırılarak tedavülde sadece ₺ bırakılmıştır.

General Note

After 1st January 2005, six zero is taken from Turkish Lira and “New” Turkish Lira used until 1st January 2009 transition period. Also, ₺ sign started to use as a symbol of Turkish Lira after the date. Since 1st January 2010 “New” sign removed and only ₺ symbol started to use as a symbol of Turkish Lira

İÇİNDEKİLER		CONTENTS	
Tablo	Sayfa	Table	Page
TEMEL EKONOMİK VE SOSYAL GÖSTERGELER	2	MAIN ECONOMIC AND SOCIAL INDICATORS	2
Tablo - 1 Gayri Safi Milli Hasılda Sektörel Gelişmeler (Cari Fiyatlarla)	4	Table - 1 Sectoral Developments in Gross National Product (Current Prices)	4
Tablo - 2 Gayri Safi Milli Hasılda Sektörel Gelişmeler (1977 Fiyatlarıyla)	4	Table - 1 Sectoral Developments in Gross National Product (1977 Prices)	4
Tablo - 3 Sektörel Katma Değerlerin Reel Büyüme Hızları	6	Table - 3 Real Growth Rates of Sectoral Value Added	6
Tablo - 4 Gayri Safi Yurtiçi Hasılının Dağılımı (Cari Fiyatlarla)	6	Table - 4 Sectoral Distribution of Gross Domestic Product (Current Prices)	6
Tablo - 5 Ekonominin Genel Dengesi (Cari Fiyatlarla)	8	Table - 5 General Balance of the Economy (Current Prices)	8
Tablo - 6 Ekonominin Genel Dengesi (1977 Fiyatlarıyla)	8	Table - 5 General Balance of the Economy (1977 Prices)	8
Tablo - 7 Kaynaklar - Harcamalar Dengesi (Cari Fiyatlarla)	10	Table - 7 Balance of Resources and Expenditures (Current Prices)	10
Tablo - 8 Kaynaklar - Harcamalar Dengesi (1977 Fiyatlarıyla)	10	Table - 8 Balance of Resources and Expenditures (1977 Prices)	10
Tablo - 9 Yatırım - Tasarruf Dengesi (Cari Fiyatlarla)	12	Table - 9 Balance of Investment and Savings (Current Prices)	12
Tablo - 10 Yatırım - Tasarruf Dengesi (1977 Fiyatlarıyla)	12	Table - 10 Balance of Investment and Savings (1977 Prices)	12
Tablo - 11 Sabit Sermaye Yatırımlarının Sektörel Dağılımı(Cari Fiyatlarla)	14	Table - 11 Sectoral Distribution of Fixed Capital Investments (Current Prices)	14
Tablo - 12 Sabit Sermaye Yatırımlarının Sektörel Dağılımı(1977 Fiyatlarıyla)	14	Table - 12 Sectoral Distribution of Fixed Capital Investments (1977 Prices)	14
Tablo - 13 Kamu Kesimi Genel Dengesi (Cari Fiyatlarla)	16	Table - 13 General Balance of Public Sector (Current Prices)	16
Tablo - 14 Kamu Kesimi Genel Dengesi (1977 Fiyatlarıyla)	16	Table - 14 General Balance of Public Sector (1977 Prices)	16
Tablo - 15 Özel Kesim Genel Dengesi (Cari Fiyatlarla)	18	Table - 15 General Balance of Private Sector (Current Prices)	18
Tablo - 16 Özel Kesim Genel Dengesi (1977 Fiyatlarıyla)	18	Table - 16 General Balance of Private Sector (1977 Prices)	18
Tablo - 17 Devlet Bütçe Dengesi (Cari Fiyatlarla)	20	Table - 17 Balance of State Budget (Current Prices)	20
Tablo - 18 Devlet Bütçe Dengesi (1977 Fiyatlarıyla)	20	Table - 18 Balance of State Budget (1977 Prices)	20
Tablo - 19 Devlet Bütçe Dengesi (GSMH Yüzdesi)	22	Table - 19 Balance of State Budget (Share in GNP)	22
Tablo - 20 Banka Mevduatları	22	Table - 20 Bank Deposits	22
Tablo - 21 Banka Plasmanlarının Sektörel Dağılımı	24	Table - 21 Sectoral Distribution of Bank Loans	24
Tablo - 22 Ödemeler Dengesi	24	Table - 22 Balance of Payments	24
Tablo - 23 Ülkeler İtibarıyla Dış Ticaret	26	Table - 23 Foreign Trade by Countries	26
Tablo - 24 Dışsatımın Yapısı	26	Table - 24 Composition of Exports	26
Tablo - 25 Ana Mal Grupları İtibarıyla Dışalım	26	Table - 25 Value of Imports by Commodity Groups	26
Tablo - 26 Konaklama Tesisleri ve Yatak Kapasitelerinin Dağılımı	28	Table - 26 Distribution of Accomodation Establishments and Bed Capacities	28
Tablo - 27 Turizm Sektöründe İstihdam Edilen Personel Sayısı	28	Table - 27 Number of Employee in Tourism Sector	28
Tablo - 28 Eğitim Sektöründe Gelişmeler	30	Table - 28 Developments in Education Sector	30
Tablo - 29 KKTC'ndeki Üniversitelerde Okuyan Öğrencilerin Dağılımı	32	Table - 29 Students at the Universities in TRNC	32
Tablo - 30 Sağlık Personeli	34	Table - 30 Health Personnel	34
Tablo - 31 Tüketici Fiyatları Endeksi Değişim Oranları (Aralık Bazına Göre)	34	Table - 31 Consumer Price Index Change (Based on December, %)	34
Tablo - 32 Asgari Ücret Gelişmeleri	35	Table - 32 Changes in Minimum Wage	35
Tablo - 33 Akaryakıt Satışı	36	Table - 33 Fuel Sales	36
Tablo - 34 Yaratılan Katma Değere Göre İstihdam	36	Table - 34 Employment According to Value Added	36
Tablo - 35 Hanehalkı İşgücü Anketine Göre İstihdam	38	Table - 35 Employment According to Household Labour Force Survey	38

EKONOMİK VE SOSYAL GÖSTERGELER

ECONOMIC AND SOCIAL INDICATORS

TEMEL EKONOMİK VE SOSYAL GÖSTERGELER

	2004	2005	2006	2007	2008
GSMH (Cari Fiyatlarla YTL)	2,520,806,747.4	3,143,699,611.6	4,101,387,190.5	4,671,255,885.9	5,128,334,134.4
GSMH (Milyon \$)	1,765.2	2,327.8	2,845.2	3,598.8	3,995.6
GSMH Reel Büyüme Hızı (%)	15.4	13.5	13.2	1.5	-3.4
Fert Başına GSMH (Cari Fiyatlarla TL/YTL) ¹¹	11,560	14,271	17,063	19,165	20,739
Fert Başına GSMH (\$)	8,095	10,567	11,837	14,765	16,158
GSYİH (Cari Fiyatlarla YTL)	2,456,744,085.7	3,070,380,966.6	3,988,099,705.5	4,604,292,065.9	5,079,907,679.4
GSYİH (Milyon \$)	1,720.3	2,273.5	2,766.6	3,547.2	3,957.9
GSYİH Reel Büyüme Hızı (%)	14.2	13.8	12.7	2.8	-2.9
Enflasyon Oranı (%)	11.6	2.7	19.2	9.4	14.5
Bütçe Açığı (Milyon \$) ¹	104.2	185.3	287.3	221.2	369.6
Banka Mevduatları (Milyon \$) ²	2,355.8	2,707.4	3,330.4	4,239.2	3,678.6
Döviz Rezervi (Milyon \$)	1,544.6	1,597.6	2,030.9	2,072.1	1,802.6
İhracat (Milyon \$)	62.0	68.1	68.1	83.7	83.7
İthalat (Milyon \$)	853.1	1,255.5	1,376.2	1,539.2	1,680.7
Dış Ticaret Dengesi (Milyon \$)	-791.1	-1,187.4	-1,308.1	-1,455.5	-1,597.0
İhracat / İthalat (%)	7.3	5.4	4.9	5.4	5.0
Gelen Turist Sayısı	599,012	652,779	715,749	791,036	808,682
Türkiye	434,744	488,023	572,633	634,580	650,405
Diğer	164,268	164,756	143,116	156,456	158,277
Net Turizm Geliri (Milyon \$)	288.3	328.8	303.2	381.0	383.7
İstihdam ³	86,914	85,583	91,815	89,787	91,223
İşsiz Sayısı ³	9,678	7,665	9,552	9,361	9,881
İşsizlik Oranı (%) ³	10.00	8.20	9.40	9.40	9.80
Nüfus	218,066	220,289	257,513 ¹⁴	268,011	274,436
Nüfus Artış Hızı (%)	1.1	1.0	16.9	4.1	2.4
Nüfus Yoğunluğu	67.3	68.0	79.4	82.7	84.7
Kaba Doğum Hızı (Binde)	16.0	16.0	14.9	15.0	15.4
Kaba Ölüm Hızı (Binde)	8.0	7.0	6.7	6.8	6.8
Doğal Artış Hızı (%)	0.8	0.9	0.8	0.9	0.9
Bebek Ölüm Hızı (Her bin canlı doğumda)	10.0	9.0	15.8	15.0	14.3
Toplam Doğurganlık Hızı	1.9	1.9	1.8	1.8	1.8
Doğuştaki Yaşam Ümidi (Yıl) ⁴					
Erkek	71.0	71.0	71.4	71.5	71.7
Kadın	75.6	75.6	76.0	76.2	76.4
Okullaşma Oranı (%)					
Okul Öncesi ⁵	100	100	100	100	100
İlkokul	100	100	100	100	100
Ortaokul	100	100	100	100	100
Genel ve Teknik Lise	94	95	84	78	77
Yüksek Öğretim	78	81	72	81	78
Sağlık Giderleri / GSMH (%)	3.0	2.0	3.4	3.9	3.5
Sağlık Giderleri / Bütçe (%)	6.0	6.0	7.2	8.6	7.6
Doktor Başına Kişi Sayısı	517	491	539	529	493
Dış Doktoru Başına Kişi Sayısı	1,896	1,777	1,922	2,062	1,960
Hemşire Başına Kişi Sayısı ⁶	419	420	394	398	414
Yatak Başına Kişi Sayısı	169	170	188	194	227
Hemşire Başına Yatak Sayısı ⁷	2	2	2	2	1
10000 Kişiye Düşen Yatak Sayısı	59	59	53	51	44
Net Elektrik Tüketimi (Milyon KWS) ⁸	705.7	797.9	855.3	955.9	989.2
Kişi Başına Elektrik Tüketimi (KWS)	3,236	3,622	3,321	3,567	3,604
Kişi Başına Akaryakıt Tüketimi (Lt) ⁹	971	1,191	991	916	900
Bin Kişiye Düşen Otomobil ¹⁰	475	518	495	500	524
Bin Kişiye Düşen Telefon	445	455	399	404	386
Bin Kişiye Düşen Cep Telefonu	1,009	1,321	1,359	1,414	1,490
Yıllık Ortalama Döviz Kurları ¹¹					
1 ABD\$ = TL (TL/YTL)	1,428,057.85	1.3505	1.4415	1.2980	1.2835
1 Stg = TL (TL/YTL)	2,610,789.70	2.4526	2.6484	2.6123	2.3942
1 KL = TL (TL/YTL)	3,072,958.00	2.9371	3.1655	3.0945	-
1 Euro = TL (TL/YTL)	1,773,843.40	1.6782	1.8054	1.7858	1.9061

¹Devlet bütçe dengesi tablosundaki finansman dengesini ifade etmektedir.

²Türk Lirası mevduatları ile döviz mevduatları ve tevdiatlarını içermektedir.

³2004 yılına kadar yaratılan katma değere göre hesaplanan istihdam ve kayıtlı ortalama işsiz sayıları ifade edilmektedir. Daha sonraki yıllarda

Hanehalkı İşgücü Anketine göre hesaplanmış değerlerdir.

⁴Yıllar itibarıyla aynı olan değerler, kapsadıkları yılların ortalama değerini ifade etmektedir.

⁵2010 yılından itibaren 4 yaş dahil edilmiştir.

⁶Kamu sağlık merkezlerindeki hemşire ve ebe sayısı esas alınmıştır.

⁷Kamu sağlık merkezlerindeki hemşire ve yatak sayısı esas alınmıştır.

⁸Santral içi tüketimi ve şebeke kayıpları düşülmüştür.

⁹Benzin, motorin ve gazyağı tüketimi esas alınmıştır.

¹⁰Salon ve estate araç sayısı esas alınmıştır.

¹¹2005 yılından itibaren YTL olarak ifade edilmiştir. (2005 yılından itibaren TL'den altı sıfır atılmıştır.)

¹²2006 Genel Nüfusve Konut Sayımı sonucu esas alınarak yeni yıl ortası de-jure nüfus tahmini serisi düzenlenmiştir.

¹³2011 Genel Nüfusve Konut Sayımı sonucu esas alınarak yeni yıl ortası de-jure nüfus tahmini serisi düzenlenmiştir.

Kaynak: Devlet Planlama Örgütü

MAIN ECONOMIC AND SOCIAL INDICATORS

2009	2010	2011	2012	2013	
5,415,280,698.8	5,649,534,936.0	6,559,174,528.7	6,915,831,629.3	7,579,403,276.2	GNP (Current Prices YTL)
3,502.5	3,750.6	3,908.5	3,840.8	3,969.5	GNP (Million \$)
-5.7	3.6	4.0	0.5	1.3	Real Growth Rate (%)
21,538	22,147	25,850	27,077	29,217	GNP Per Capita (Current Prices TL/YTL) ¹¹
13,930	14,703	15,403	15,038	15,302	GNP Per Capita (\$)
5,376,318,878.0	5,614,136,886.0	6,508,996,348.7	6,955,084,709.3	7,606,898,636.2	GDP (Current Prices YTL)
3,477.3	3,727.1	3,878.6	3,862.6	3,983.9	GDP (Million \$)
-5.5	3.7	3.9	1.8	1.1	GDP Real Growth Rate (%)
5.7	3.3	14.7	3.6	10.2	Inflation Rate (%)
491.0	375.8	299.1	128.2	285.0	Budget Deficit (Million \$) ¹
4,207.4	4,692.0	5,007.1	5,156.1	5,930.5	Bank Deposits (Million \$) ²
1,974.7	2,069.1	2,116.4	1,775.6	1,556.6	Foreign Exchange Reserves (Million \$)
71.1	96.2	152.9	122.4	120.7	Export (Million \$)
1,326.2	1,604.2	1,699.9	1,705.3	1,699.4	Import (Million \$)
-1,255.1	-1,508.0	-1,547.0	-1,582.9	-1,578.7	Foreign Trade Balance (Million \$)
5.4	6.0	9.0	7.2	7.1	Export / Import(%)
800,376	902,390	1,022,089	1,166,186	1,232,753	Tourist Arrivals
638,700	741,925	801,326	904,505	923,308	Turkey
161,676	160,465	220,763	261,681	309,445	Other
390.7	405.8	459.4	571.9	616.1	Net Tourism Revenues (Million \$)
91,550	93,498	93,470	96,539	97,868	Employment ³
12,941	12,619	9,864	9,174	8,929	Number of Unemployed ³
12.40	11.90	9.50	8.70	8.40	Unemployment Rate (%) ³
283,736	277,680	283,281 ¹²	292,129	301,988	Population
3.4	1.1	1.7	1.5	1.5	Population Increase Rate (%)
87.5	85.7	87.4	90.1	93.1	Population Density
15.4	15.2	14.6	14.8	14.4	Crude Birth Rate (Per Thousand)
6.9	6.9	4.1	4.1	4.2	Crude Death Rate (Per Thousand)
0.9	0.8	1.1	1.1	1.0	Natural Increase Rate (%)
13.6	12.9	12.3	11.8	11.3	Infant Mortality Rate (Per Thousand Live Birth)
1.9	1.9	1.8	1.8	1.8	Total Fertility Rate
					Life Expectancy at Birth (Year) ⁴
71.8	72.0	79.5	79.6	79.6	Male
76.5	76.7	83.1	83.1	83.2	Female
					Enrolment Ratio (%)
100	100	100	60	61	Pre-School ⁵
100	100	100	108	107	Primary School
100	100	100	106	104	Junior High School
78	79	79	86	88	General and Technical High School
74	87	87	74	65	Higher Education
3.5	3.4	3.1	3.1	3.2	Health Expenditure / GNP (%)
7.4	7.3	7.2	7.3	7.4	Health Expenditure / Budget (%)
486	486	500	489	487	Persons Per Doctor
1,970	2,088	2,266	2,148	2,040	Persons Per Dentist
406	417	411	414	422	Persons Per Nurse ⁶
217	172	170	151	157	Persons Per Bed
1	2	2	2	2	Beds Per Nurse ⁷
46	58	59	66	64	Beds Per 10000 Person
922.2	887.7	1,136.4	1,220.5	1,197.4	Net Electricity Consumption (Million KWH) ⁸
3,250	3,093	4,012	4,178	3,965	Electricity Consumption Per Capita (KWH)
832	954	904	933	824	Oil Product Consumption Per Capita (Lt) ⁹
385	363	365	369	374	Automobile Per 1000 Person ¹⁰
362	359	350	341	329	Telephone Per 1000 Person
1,606	1,832	2,168	2,048	1,977	Cellular Phone Per 1000 Person
					Annual Average Exchange Rates ¹¹
1.5461	1.5063	1.6782	1.8006	1.9094	1 US\$ = TL (YTL)
2.4252	2.3296	2.6884	2.8483	2.9896	1 Stg = TL (YTL)
-	-	-	-	-	1 CyP = TL (YTL)
2.1628	1.9986	2.3349	2.3164	2.5311	1 Euro = TL (YTL)

¹Indicates the fiscal balance in the balance of state budget table.

²Includes Turkish Lira and foreign currency deposits.

³Until 2004 employment according to value added and registered average unemployed are considered. For the following years figures are based on Household Labour Force Surveys.

⁴Same figures by years are the average of the years covered.

⁵Since 2010, 4 years old pupils are included.

⁶Number of nurse and mid-wife in public health centers is considered.

⁷Number of nurse and beds in public health centers is considered.

⁸Consumption within the power plant and network losses are excluded.

⁹Benzine, diesel fuel and kerosene sales are considered.

¹⁰Number of saloon and estate cars is considered.

¹¹Indicated as New Turkish Lira from 2005.

¹²A new mid-year population estimate series has been prepared based on the 2006 General Population and Housing Unit Census.

¹³A new mid-year population estimate series has been prepared based on the 2011 General Population and Housing Unit Census.

Source: State Planning Organization

Tablo - 1 Gayri Safi Milli Hasıladaki Sektörel Gelişmeler

Sektörler	(Cari Fiyatlarla YTL)				
	2004	2005	2006	2007	2008
1. Tarım	222,993,161.4	214,199,034.4	249,446,249.5	288,151,830.1	259,154,100.9
1.1. Bitkisel	135,405,526.6	114,550,000.4	128,152,058.0	161,307,927.0	137,725,583.2
1.2. Hayvancılık	75,763,647.8	85,190,495.1	107,632,385.8	110,427,055.6	105,088,421.9
1.3. Ormancılık	813,571.0	995,504.6	810,420.5	1,040,434.0	890,117.9
1.4. Balıkçılık	11,010,416.0	13,463,034.3	12,851,385.2	15,376,413.5	15,449,977.9
2. Sanayi	231,046,611.0	281,023,837.1	377,504,439.0	430,808,660.5	542,766,477.2
2.1. Taşocakçılığı	13,109,133.2	17,596,564.2	41,080,997.3	48,681,681.6	42,297,366.5
2.2. İmalat Sanayii	118,634,340.9	146,091,419.9	180,786,026.1	204,294,691.7	202,736,045.2
2.3. Elektrik-Su	99,303,136.9	117,335,853.0	155,637,415.6	177,832,287.1	297,733,065.5
3. İnşaat	106,808,649.0	164,910,647.6	314,785,285.7	364,429,418.0	362,216,034.6
4. Ticaret-Turizm	391,227,279.3	541,407,692.0	617,508,618.1	630,286,930.1	721,709,047.4
4.1. Toptan ve Perakende Ticaret	264,236,699.3	370,648,370.3	455,028,113.5	435,504,431.4	491,869,791.6
4.2. Otelcilik ve Lokantacılık	126,990,580.0	170,759,321.7	162,480,504.6	194,782,498.7	229,839,255.8
5. Ulaştırma-Haberleşme	257,580,209.2	328,773,502.2	437,242,766.0	533,409,559.0	614,527,377.1
6. Mali Müesseseler	187,245,581.7	195,523,141.4	259,316,015.9	309,354,672.4	357,835,272.5
7. Konut Sahipliği	61,591,937.3	70,261,205.2	117,722,525.7	144,191,222.9	175,938,464.6
8. Serbest Meslek ve Hizmetler	225,376,845.3	307,873,501.9	441,919,623.1	493,519,363.3	525,208,660.7
9. Kamu Hizmetleri	510,392,550.4	628,119,921.8	808,000,153.1	1,003,489,892.8	1,103,967,143.1
10. İthalat Vergileri	262,481,261.1	338,288,483.0	364,654,029.4	406,650,516.8	416,585,101.4
11. GSYİH	2,456,744,085.7	3,070,380,966.6	3,988,099,705.5	4,604,292,065.9	5,079,907,679.4
12. Net Dış Alem Faktör Gelirleri	64,062,661.7	73,318,645.0	113,287,485.0	66,963,820.0	48,426,455.0
GSMH	2,520,806,747.4	3,143,699,611.6	4,101,387,190.5	4,671,255,885.9	5,128,334,134.4

Kaynak: Devlet Planlama Örgütü

Tablo - 2 Gayri Safi Milli Hasıladaki Sektörel Gelişmeler

Sektörler	(1977 Fiyatlarıyla YTL)				
	2004	2005	2006	2007	2008
1. Tarım	1,147.2	1,179.5	1,141.7	1,146.5	938.1
1.1. Bitkisel	657.4	618.1	579.3	580.0	423.7
1.2. Hayvancılık	412.0	463.2	489.6	478.1	434.0
1.3. Ormancılık	26.1	31.1	21.2	24.9	19.5
1.4. Balıkçılık	51.7	67.1	51.6	63.5	60.8
2. Sanayi	1,282.4	1,364.7	1,638.4	1,624.4	1,457.6
2.1. Taşocakçılığı	39.2	43.5	64.1	64.8	58.8
2.2. İmalat Sanayii	1,028.0	1,080.9	1,313.3	1,274.7	1,104.3
2.3. Elektrik-Su	215.2	240.3	261.0	284.9	294.5
3. İnşaat	1,068.9	1,271.0	2,136.9	2,227.3	2,049.0
4. Ticaret-Turizm	2,004.8	2,420.9	2,650.7	2,578.9	2,524.8
4.1. Toptan ve Perakende Ticaret	1,618.5	2,021.9	2,296.6	2,199.8	2,123.7
4.2. Otelcilik ve Lokantacılık	386.3	399.0	354.1	379.1	401.1
5. Ulaştırma-Haberleşme	1,303.3	1,487.8	1,478.0	1,425.0	1,456.2
6. Mali Müesseseler	414.9	432.4	470.7	500.5	548.7
7. Konut Sahipliği	508.9	526.0	631.8	660.6	678.3
8. Serbest Meslek ve Hizmetler	1,074.9	1,280.0	1,440.2	1,534.7	1,600.9
9. Kamu Hizmetleri	1,592.8	1,700.8	1,741.0	1,884.0	1,906.1
10. İthalat Vergileri	1,043.2	1,353.1	1,344.5	1,509.5	1,497.8
11. GSYİH	11,441.3	13,016.2	14,673.9	15,091.3	14,657.4
12. Net Dış Alem Faktör Gelirleri	298.3	310.8	416.8	219.5	139.7
GSMH	11,739.6	13,327.0	15,090.7	15,310.8	14,797.2

Kaynak: Devlet Planlama Örgütü

Table - 1 Sectoral Developments in Gross National Product

(Current Prices YTL)

2009	2010	2011	2012	2013	Sectors
300,616,430.7	330,292,725.0	366,385,942.1	386,521,999.6	404,964,639.3	1. Agriculture
154,210,929.2	169,949,105.9	182,239,796.9	186,988,276.2	172,818,338.7	1.1. Crop Production
127,678,531.2	137,399,163.3	158,379,428.8	169,582,597.1	200,276,539.1	1.2. Livestock Production
724,255.4	897,839.6	955,694.4	1,051,486.5	1,155,198.2	1.3. Forestry
18,002,714.9	22,046,616.2	24,811,022.0	28,899,639.8	30,714,563.3	1.4. Fishing
516,727,436.0	552,836,167.3	558,480,243.8	587,060,602.7	636,625,615.7	2. Industry
35,529,787.9	35,628,354.3	46,499,012.4	42,610,280.7	47,730,970.7	2.1. Quarrying
171,815,806.2	130,888,723.8	165,797,310.5	192,323,577.4	221,393,058.9	2.2. Manufacturing
309,381,841.9	386,319,089.2	346,183,920.9	352,126,744.7	367,501,586.1	2.3. Electricity - Water
346,383,111.8	312,118,707.4	408,495,970.9	335,779,569.4	370,660,075.0	3. Construction
766,293,097.7	900,033,652.9	1,216,786,131.2	1,385,288,666.6	1,527,899,266.0	4. Trade - Tourism
484,110,428.6	598,030,024.3	722,249,915.7	794,223,532.7	852,677,265.6	4.1. Wholesale and Retail Trade
282,182,669.0	302,003,628.5	494,536,215.5	591,065,133.9	675,222,000.4	4.2. Hotels and Restaurants
597,262,858.8	525,213,182.4	553,109,188.9	642,862,532.9	711,369,494.2	5. Transport and Communication
388,421,732.4	404,370,969.7	472,603,396.4	506,016,653.5	579,666,453.3	6. Financial Institutions
202,491,463.9	220,581,154.0	274,371,576.8	305,768,610.1	358,244,276.0	7. Ownership and Dwellings
609,293,196.4	652,317,269.0	727,498,986.3	801,773,079.2	891,643,479.0	8. Business and Personal Services
1,201,228,086.4	1,180,064,551.9	1,294,282,251.1	1,294,895,632.5	1,349,944,886.1	9. Public Services
447,601,464.0	536,308,506.4	636,982,661.1	709,117,362.8	775,880,451.7	10. Import Duties
5,376,318,878.0	5,614,136,886.0	6,508,996,348.7	6,955,084,709.3	7,606,898,636.2	11. GDP
38,961,820.8	35,398,050.0	50,178,180.0	-39,253,080.0	-27,495,360.0	12. Net Factor Income from Abroad
5,415,280,698.8	5,649,534,936.0	6,559,174,528.7	6,915,831,629.3	7,579,403,276.2	GNP

Source: State Planning Organization

Table - 2 Sectoral Developments in Gross National Product

(1977 Prices YTL)

2009	2010	2011	2012	2013	Sectors
1,014.8	1,116.4	1,236.4	1,281.6	1,260.8	1. Agriculture
476.1	555.1	618.9	641.6	555.8	1.1. Crop Production
461.1	482.2	528.7	549.7	617.9	1.2. Livestock Production
15.0	18.0	16.7	17.7	17.7	1.3. Forestry
62.6	61.2	72.1	72.6	69.5	1.4. Fishing
1,324.5	1,321.9	1,366.5	1,356.7	1,379.9	2. Industry
49.7	49.7	51.1	46.5	45.9	2.1. Quarrying
986.1	970.0	976.9	985.7	1,008.9	2.2. Manufacturing
288.7	302.2	338.5	324.5	325.1	2.3. Electricity - Water
1,670.8	1,734.6	1,791.3	1,503.9	1,498.6	3. Construction
2,304.6	2,726.9	2,891.6	3,067.7	3,112.0	4. Trade - Tourism
1,881.8	2,286.3	2,348.3	2,444.6	2,434.5	4.1. Wholesale and Retail Trade
422.7	440.6	543.3	623.1	677.5	4.2. Hotels and Restaurants
1,415.3	1,132.5	1,083.7	1,145.0	1,167.5	5. Transport and Communication
558.0	559.6	567.3	613.0	658.7	6. Financial Institutions
703.8	731.7	760.5	788.4	813.5	7. Ownership and Dwellings
1,655.9	1,567.7	1,634.7	1,659.4	1,697.4	8. Business and Personal Services
1,810.3	1,817.9	1,868.5	1,903.6	1,930.5	9. Public Services
1,392.0	1,651.5	1,716.4	1,868.8	1,830.3	10. Import Duties
13,850.0	14,360.8	14,917.1	15,188.1	15,349.1	11. GDP
100.4	90.5	115.0	-85.7	-55.5	12. Net Factor Income from Abroad
13,950.4	14,451.3	15,032.1	15,102.4	15,293.6	GNP

Source: State Planning Organization

Tablo - 3 Sektörel Katma Değerlerin Reel Büyüme Hızları

Sektörler						(%)
	2004	2005	2006	2007	2008	
1. Tarım	8.5	2.8	-3.2	0.4	-18.2	
1.1. Bitkisel	9.4	-6.0	-6.3	0.1	-26.9	
1.2. Hayvancılık	6.0	12.4	5.7	-2.3	-9.2	
1.3. Ormancılık	99.2	19.2	-31.8	17.5	-21.7	
1.4. Balıkçılık	-5.5	29.8	-23.1	23.1	-4.3	
2. Sanayi	10.6	6.4	20.0	-0.9	-10.3	
2.1. Taşocakçılığı	8.6	11.0	47.2	1.1	-9.3	
2.2. İmalat Sanayii	10.2	5.1	21.5	-2.9	-13.4	
2.3. Elektrik-Su	13.3	11.7	8.6	9.2	3.4	
3. İnşaat	5.3	18.9	68.1	4.2	-8.0	
4. Ticaret-Turizm	25.5	20.8	9.5	-2.7	-2.1	
4.1. Toptan ve Perakende Ticaret	27.1	24.9	13.6	-4.2	-3.5	
4.2. Otelcilik ve Lokantacılık	18.9	3.3	-11.2	7.1	5.8	
5. Ulaştırma-Haberleşme	8.8	14.2	-0.7	-3.6	2.2	
6. Mali Müesseseler	-0.3	4.2	8.9	6.3	9.6	
7. Konut Sahipliği	2.4	3.4	20.1	4.6	2.7	
8. Serbest Meslek ve Hizmetler	26.0	19.1	12.5	6.6	4.3	
9. Kamu Hizmetleri	5.2	6.8	2.4	8.2	1.2	
10. İthalat Vergileri	46.8	29.7	-0.6	12.3	-0.8	
11. GSYİH	14.2	13.8	12.7	2.8	-2.9	
12. Net Dış Alem Faktör Gelirleri	88.5	7.4	34.1	-47.3	-36.4	
GSMH	15.4	13.5	13.2	1.5	-3.4	

Kaynak: Devlet Planlama Örgütü

Tablo - 4 Gayri Safi Yurtiçi Hasılanın Dağılımı

Sektörler						(Cari Fiyatlarla, %)
	2004	2005	2006	2007	2008	
1. Tarım	9.1	7.0	6.3	6.3	5.1	
1.1. Bitkisel	5.5	3.7	3.2	3.5	2.7	
1.2. Hayvancılık	3.1	2.8	2.7	2.4	2.1	
1.3. Ormancılık	
1.4. Balıkçılık	0.4	0.4	0.3	0.3	0.3	
2. Sanayi	9.4	9.2	9.5	9.4	10.7	
2.1. Taşocakçılığı	0.5	0.6	1.0	1.1	0.8	
2.2. İmalat Sanayii	4.8	4.8	4.5	4.4	4.0	
2.3. Elektrik-Su	4.0	3.8	3.9	3.9	5.9	
3. İnşaat	4.3	5.4	7.9	7.9	7.1	
4. Ticaret-Turizm	15.9	17.6	15.5	13.7	14.2	
4.1. Toptan ve Perakende Ticaret	10.8	12.1	11.4	9.5	9.7	
4.2. Otelcilik ve Lokantacılık	5.2	5.6	4.1	4.2	4.5	
5. Ulaştırma-Haberleşme	10.5	10.7	11.0	11.6	12.1	
6. Mali Müesseseler	7.6	6.4	6.5	6.7	7.0	
7. Konut Sahipliği	2.5	2.3	3.0	3.1	3.5	
8. Serbest Meslek ve Hizmetler	9.2	10.0	11.1	10.7	10.3	
9. Kamu Hizmetleri	20.8	20.5	20.3	21.8	21.7	
10. İthalat Vergileri	10.7	11.0	9.1	8.8	8.2	
GSYİH	100.0	100.0	100.0	100.0	100.0	

Kaynak: Devlet Planlama Örgütü

Table - 3 Reel Growth Rates of Sectoral Value Added

					(%)
2009	2010	2011	2012	2013	Sectors
8.2	10.0	10.7	3.7	-1.6	1. Agriculture
12.4	16.6	11.5	3.7	-13.4	1.1. Crop Production
6.2	4.6	9.7	4.0	12.4	1.2. Livestock Production
-23.1	20.0	-7.2	6.2	-0.3	1.3. Forestry
3.0	-2.2	17.9	0.6	-4.3	1.4. Fishing
-9.1	-0.2	3.4	-0.7	1.7	2. Industry
-15.5	0.0	2.8	-8.9	-1.4	2.1. Quarrying
-10.7	-1.6	0.7	0.9	2.4	2.2. Manufacturing
-2.0	4.7	12.0	-4.1	0.2	2.3. Electricity - Water
-18.5	3.8	3.3	-16.0	-0.3	3. Construction
-8.7	18.3	6.0	6.1	1.4	4. Trade-Tourism
-11.4	21.5	2.7	4.1	-0.4	4.1. Wholesale and Retail Trade
5.4	4.2	23.3	14.7	8.7	4.2. Hotels and Restaurants
-2.8	-20.0	-4.3	5.7	2.0	5. Transport-Communication
1.7	0.3	1.4	8.1	7.5	6. Financial Institutions
3.8	4.0	3.9	3.7	3.2	7. Ownership Of Dwellings
3.4	-5.3	4.3	1.5	2.3	8. Business and Personal Services
-5.0	0.4	2.8	1.9	1.4	9. Public Services
-7.1	18.6	3.9	8.9	-2.1	10. Import Duties
-5.5	3.7	3.9	1.8	1.1	11. GDP
-28.2	-9.9	27.0	-174.5	35.3	12. Net Factor Income From Abroad
-5.7	3.6	4.0	0.5	1.3	GNP

Source: State Planning Organization

Table - 4 Sectoral Distribution of Gross Domestic Product

					(Current Prices, %)
2009	2010	2011	2012	2013	Sectors
5.6	5.9	5.6	5.6	5.3	1. Agriculture
2.9	3.0	2.8	2.7	2.3	1.1. Crop Production
2.4	2.4	2.4	2.4	2.6	1.2. Livestock Production
..	1.3. Forestry
0.3	0.4	0.4	0.4	0.4	1.4. Fishing
9.6	9.8	8.6	8.4	8.4	2. Industry
0.7	0.6	0.7	0.6	0.6	2.1. Quarrying
3.2	2.3	2.5	2.8	2.9	2.2. Manufacturing
5.8	6.9	5.3	5.1	4.8	2.3. Electricity - Water
6.4	5.6	6.3	4.8	4.9	3. Construction
14.3	16.0	18.7	19.9	20.1	4. Trade-Tourism
9.0	10.7	11.1	11.4	11.2	4.1. Wholesale and Retail Trade
5.2	5.4	7.6	8.5	8.9	4.2. Hotels and Restaurants
11.1	9.4	8.5	9.2	9.4	5. Transport-Communication
7.2	7.2	7.3	7.3	7.6	6. Financial Institutions
3.8	3.9	4.2	4.4	4.7	7. Ownership Of Dwellings
11.3	11.6	11.2	11.5	11.7	8. Business and Personal Services
22.3	21.0	19.9	18.6	17.7	9. Public Services
8.3	9.6	9.8	10.2	10.2	10. Import Duties
100.0	100.0	100.0	100.0	100.0	GDP

Source: State Planning Organization

Tablo - 5 Ekonominin Genel Dengesi

	(Cari Fiyatlarla YTL)				
	2004	2005	2006	2007	2008
1. Toplam Kaynaklar	2,540,942,363.1	3,516,842,761.6	4,394,876,590.5	4,996,275,085.9	5,629,284,184.4
1.1. GSMH	2,520,806,747.4	3,143,699,611.6	4,101,387,190.5	4,671,255,885.9	5,128,334,134.4
1.2. Dış Açık	20,135,615.7	373,143,150.0	293,489,400.0	325,019,200.0	500,950,050.0
2. Toplam Yatırımlar	509,834,737.3	686,011,306.8	1,018,044,241.0	1,089,189,810.9	1,049,142,187.9
2.1. Sabit Sermaye	466,600,661.0	645,460,056.4	966,659,314.9	1,064,282,208.1	1,062,702,394.2
2.1.1. Kamu	146,665,039.8	174,763,841.3	308,425,110.5	262,142,369.9	267,192,187.9
2.1.2. Özel	319,935,621.2	470,696,215.1	658,234,204.4	802,139,838.2	795,510,206.3
2.2. Stok Değişimleri	43,234,076.3	40,551,250.4	51,384,926.1	24,907,602.8	-13,560,206.3
2.2.1. Kamu	1,095,183.5	6,335,935.7	7,362,476.2	-6,637,526.4	13,833,147.5
2.2.2. Özel	42,138,892.8	34,215,314.7	44,022,449.9	31,545,129.2	-27,393,353.8
3. Toplam Tüketim	2,031,107,625.8	2,830,831,454.8	3,376,832,349.5	3,907,085,275.0	4,580,141,996.5
4. Kamu Harcanabilir Geliri	428,522,480.2	561,687,554.2	755,998,286.5	904,709,892.4	1,041,495,990.3
4.1. Kamu Tüketimi	597,959,676.7	749,134,768.6	988,884,634.8	1,231,306,843.6	1,366,456,132.8
4.2. Kamu Tasarrufu	-169,437,196.5	-187,447,214.4	-232,886,348.3	-326,596,951.2	-324,960,142.5
4.3. Kamu Yatırımı	147,760,223.3	181,099,777.0	315,787,586.7	255,504,843.5	281,025,335.4
4.4. Kamu Tasarruf-Yatırım Farkı	-317,197,419.8	-368,546,991.4	-548,673,935.0	-582,101,794.7	-605,985,477.9
5. Özel Harcanabilir Gelir	2,092,284,267.2	2,582,012,057.4	3,345,388,904.0	3,766,545,993.5	4,086,838,144.1
5.1. Özel Tüketim	1,433,147,949.1	2,081,696,686.2	2,387,947,714.7	2,675,778,431.4	3,213,685,863.7
5.2. Özel Tasarruf	659,136,318.1	500,315,371.2	957,441,189.3	1,090,767,562.1	873,152,280.4
5.3. Özel Yatırım	362,074,514.0	504,911,529.8	702,256,654.3	833,684,967.4	768,116,852.5
5.4. Özel Tasarruf-Yatırım Farkı	297,061,804.1	-4,596,158.6	255,184,535.0	257,082,594.7	105,035,427.9
Özel Tasarruf Oranı (%)	31.5	19.4	28.6	29.0	21.4
6. Toplam Yurtiçi Tasarruflar	489,699,121.6	312,868,156.8	724,554,841.0	764,170,610.9	548,192,137.9
Yatırımlar/GSMH (%)	20.2	21.8	24.8	23.3	20.5
Tasarruflar/GSMH (%)	19.4	10.0	17.7	16.4	10.7

Kaynak: Devlet Planlama Örgütü

Tablo - 6 Ekonominin Genel Dengesi

	(1977 Fiyatlarıyla YTL)				
	2004	2005	2006	2007	2008
1. Toplam Kaynaklar	11,833.4	14,908.9	16,170.6	16,376.1	16,242.6
1.1. GSMH	11,739.6	13,327.0	15,090.7	15,310.8	14,797.2
1.2. Dış Açık	93.8	1,581.9	1,079.9	1,065.3	1,445.4
2. Toplam Yatırımlar	2,374.3	2,908.2	3,745.8	3,570.0	3,027.2
2.1. Sabit Sermaye	2,173.0	2,736.3	3,556.7	3,488.4	3,066.3
2.1.1. Kamu	683.0	740.9	1,134.8	859.2	771.0
2.1.2. Özel	1,490.0	1,995.4	2,421.9	2,629.1	2,295.4
2.2. Stok Değişimleri	201.3	171.9	189.1	81.6	-39.1
2.2.1. Kamu	5.1	26.9	27.1	-21.8	39.9
2.2.2. Özel	196.2	145.0	162.0	103.4	-79.0
3. Toplam Tüketim	9,459.0	12,000.7	12,424.8	12,806.1	13,215.5
4. Kamu Harcanabilir Geliri	1,995.7	2,381.1	2,781.6	2,965.3	3,005.1
4.1. Kamu Tüketimi	2,784.8	3,175.8	3,638.5	4,035.8	3,942.7
4.2. Kamu Tasarrufu	-789.1	-794.7	-856.9	-1,070.5	-937.6
4.3. Kamu Yatırımı	688.1	767.7	1,161.9	837.5	810.9
4.4. Kamu Tasarruf-Yatırım Farkı	-1,477.2	-1,562.4	-2,018.8	-1,907.9	-1,748.5
5. Özel Harcanabilir Gelir	9,743.9	10,945.9	12,309.1	12,345.5	11,792.1
5.1. Özel Tüketim	6,674.3	8,824.9	8,786.3	8,770.3	9,272.7
5.2. Özel Tasarruf	3,069.7	2,121.0	3,522.8	3,575.2	2,519.4
5.3. Özel Yatırım	1,686.2	2,140.4	2,583.9	2,732.5	2,216.3
5.4. Özel Tasarruf-Yatırım Farkı	1,383.4	-19.4	938.9	842.6	303.1
Özel Tasarruf Oranı (%)	31.5	19.4	28.6	29.0	21.4
6. Toplam Yurtiçi Tasarruflar	2,280.6	1,326.3	2,665.9	2,504.7	1,581.7
Yatırımlar/GSMH (%)	20.2	21.8	24.8	23.3	20.5
Tasarruflar/GSMH (%)	19.4	10.0	17.7	16.4	10.7

Kaynak: Devlet Planlama Örgütü

Table - 5 General Balance of Economy

(Current Prices YTL)

2009	2010	2011	2012	2013	
5,516,650,698.8	6,064,972,476.0	6,849,670,948.7	7,141,086,689.3	7,664,753,456.2	1. Total Resources
5,415,280,698.8	5,649,534,936.0	6,559,174,528.7	6,915,831,629.3	7,579,403,276.2	1.1. GNP
101,370,000.0	415,437,540.0	290,496,420.0	225,255,060.0	85,350,180.0	1.2. Current Account Deficit
946,606,139.1	1,049,584,498.4	1,266,526,160.6	1,175,511,686.6	147,835,548.3	2. Total Investments
930,347,471.4	1,016,498,344.7	1,209,955,946.4	1,094,397,325.7	1,147,686,269.5	2.1. Fixed Capital
162,637,178.5	202,326,006.0	193,846,399.1	215,098,572.8	216,503,357.0	2.1.1. Public
767,710,292.9	814,172,338.6	1,016,109,547.2	879,298,752.9	931,182,912.4	2.1.2. Private
16,258,667.7	33,086,153.7	56,606,214.2	81,114,360.9	149,278.8	2.2. Changes in Stocks
22,475,490.8	-21,164,741.7	2,899,297.7	22,323,634.1	-32,798,571.4	2.2.1. Public
-6,216,823.1	54,250,895.4	53,706,916.5	58,790,726.8	32,947,850.3	2.2.2. Private
4,570,044,559.7	5,015,387,977.6	5,583,108,788.1	5,965,575,002.7	6,516,917,907.9	3. Total Consumption
751,938,260.8	962,203,916.8	1,059,244,715.5	1,491,823,326.0	1,341,301,971.7	4. Public Disposable Income
1,487,589,785.8	1,547,895,080.9	1,621,100,773.5	1,667,829,509.0	1,836,123,617.8	4.1. Public Consumption
-735,651,525.0	-585,691,164.1	-561,856,058.0	-176,006,183.0	-494,821,646.1	4.2. Public Savings
185,112,669.3	181,161,264.3	196,745,696.8	237,422,206.9	183,704,758.6	4.3. Public Investments
-920,764,194.3	-766,852,428.4	-758,601,754.8	-413,428,389.9	-678,526,431.7	4.4. Difference in Public Savings-Investments
4,663,342,438.0	4,687,331,019.2	5,449,926,813.2	5,424,008,303.3	6,238,101,304.5	5. Private Disposable Income
3,082,454,773.9	3,467,492,896.7	3,962,008,014.7	4,297,745,493.7	4,680,794,290.1	5.1. Private Consumption
1,580,887,664.1	1,219,838,122.5	1,537,921,798.5	1,126,262,809.6	1,557,307,014.4	5.2. Private Savings
761,493,469.8	868,423,234.0	1,069,816,463.8	938,089,479.7	964,130,762.7	5.3. Private Investments
819,394,194.3	351,414,888.5	468,105,334.7	188,173,329.9	593,176,251.7	5.4. Difference in Private Savings-Investments
33.9	26.0	28.0	20.8	25.0	Private Savings Rate (%)
845,236,139.1	634,146,958.4	976,065,740.6	950,256,626.6	1,062,485,368.3	6. Total Domestic Savings
17.5	18.6	19.3	17.0	15.1	Investments/GNP (%)
15.6	11.2	14.9	13.7	14.0	Savings/GNP (%)

Source: State Planning Organization

Table - 6 General Balance of Economy

(1977 Prices YTL)

2009	2010	2011	2012	2013	
14,211.5	15,514.0	15,697.9	15,594.3	15,465.8	1. Total Resources
13,950.4	14,451.3	15,032.1	15,102.4	15,293.6	1.1. GNP
261.1	1,062.7	665.8	491.9	172.2	1.2. Current Account Deficit
2,438.6	2,684.8	2,902.7	2,567.0	2,316.1	2. Total Investments
2,396.7	2,600.2	2,772.9	2,389.9	2,315.8	2.1. Fixed Capital
419.0	517.5	444.3	469.7	436.9	2.1.1. Public
1,977.7	2,082.6	2,328.7	1,920.2	1,878.9	2.1.2. Private
41.9	84.6	129.7	177.1	0.3	2.2. Changes in Stocks
57.9	-54.1	6.6	48.7	-66.2	2.2.1. Public
-16.0	138.8	123.1	128.4	66.5	2.2.2. Private
11,773.0	12,829.2	12,795.2	13,027.3	13,149.8	3. Total Consumption
1,937.1	2,461.3	2,427.5	3,257.8	2,706.5	4. Public Disposable Income
3,832.2	3,959.5	3,715.2	3,642.1	3,704.9	4.1. Public Consumption
-1,895.1	-1,498.2	-1,287.6	-384.4	-998.4	4.2. Public Savings
476.9	463.4	450.9	518.5	370.7	4.3. Public Investments
-2,372.0	-1,961.6	-1,738.5	-902.8	-1,369.1	4.4. Difference in Public Savings-Investments
12,013.4	11,990.1	12,604.6	11,844.6	12,587.2	5. Private Disposable Income
7,940.8	8,869.7	9,080.0	9,385.2	9,444.8	5.1. Private Consumption
4,072.6	3,120.3	3,524.6	2,459.5	3,142.3	5.2. Private Savings
1,961.7	2,221.4	2,451.8	2,048.5	1,945.4	5.3. Private Investments
2,110.9	898.9	1,072.8	410.9	1,196.9	5.4. Difference in Private Savings-Investments
33.9	26.0	28.0	20.8	25.0	Private Savings Rate (%)
2,177.4	1,622.1	2,236.9	2,075.1	2,143.9	6. Total Domestic Savings
17.5	18.6	19.3	17.0	15.1	Investments/GNP (%)
15.6	11.2	14.9	13.7	14.0	Savings/GNP (%)

Source: State Planning Organization

Tablo - 7 Kaynaklar - Harcamalar Dengesi

	(Cari Fiyatlarla YTL)				
	2004	2005	2006	2007	2008
1. Toplam Kaynaklar	2,540,942,363.1	3,516,842,761.6	4,394,876,590.5	4,996,275,085.9	5,629,284,184.4
1.1. GSMH	2,520,806,747.4	3,143,699,611.6	4,101,387,190.5	4,671,255,885.9	5,128,334,134.4
1.2. Dış Açık	20,135,615.7	373,143,150.0	293,489,400.0	325,019,200.0	500,950,050.0
2. Toplam Yatırımlar	509,834,737.3	686,011,306.8	1,018,044,241.0	1,089,189,810.9	1,049,142,187.9
2.1. Sabit Sermaye	466,600,661.0	645,460,056.4	966,659,314.9	1,064,282,208.1	1,062,702,394.2
2.1.1. Kamu	146,665,039.8	174,763,841.3	308,425,110.5	262,142,369.9	267,192,187.9
2.1.2. Özel	319,935,621.2	470,696,215.1	658,234,204.4	802,139,838.2	795,510,206.3
2.2. Stok Değişimleri	43,234,076.3	40,551,250.4	51,384,926.1	24,907,602.8	-13,560,206.3
2.2.1. Kamu	1,095,183.5	6,335,935.7	7,362,476.2	-6,637,526.4	13,833,147.5
2.2.2. Özel	42,138,892.8	34,215,314.7	44,022,449.9	31,545,129.2	-27,393,353.8
3. Toplam Tüketim	2,031,107,625.8	2,830,831,454.8	3,376,832,349.5	3,907,085,275.0	4,580,141,996.5
3.1. Kamu	597,959,676.7	749,134,768.6	988,884,634.8	1,231,306,843.6	1,366,456,132.8
3.2. Özel	1,433,147,949.1	2,081,696,686.2	2,387,947,714.7	2,675,778,431.4	3,213,685,863.7
4. Toplam Yurtiçi Tasarruflar (GSMH - Toplam Tüketim)	489,699,121.6	312,868,156.8	724,554,841.0	764,170,610.9	548,192,137.9

Kaynak: Devlet Planlama Örgütü

Tablo - 8 Kaynaklar - Harcamalar Dengesi

	(1977 Fiyatlarıyla YTL)				
	2004	2005	2006	2007	2008
1. Toplam Kaynaklar	11,833.4	14,908.9	16,170.6	16,376.1	16,242.6
1.1. GSMH	11,739.6	13,327.0	15,090.7	15,310.8	14,797.2
1.2. Dış Açık	93.8	1,581.9	1,079.9	1,065.3	1,445.4
2. Toplam Yatırımlar	2,374.3	2,908.2	3,745.8	3,570.0	3,027.2
2.1. Sabit Sermaye	2,173.0	2,736.3	3,556.7	3,448.4	3,066.3
2.1.1. Kamu	683.0	740.9	1,134.8	859.2	771.0
2.1.2. Özel	1,490.0	1,995.4	2,421.9	2,629.1	2,295.4
2.2. Stok Değişimleri	201.3	171.9	189.1	81.6	-39.1
2.2.1. Kamu	5.1	26.9	27.1	-21.8	39.9
2.2.2. Özel	196.2	145.0	162.0	103.4	-79.0
3. Toplam Tüketim	9,459.0	12,000.7	12,424.8	12,806.1	13,215.5
3.1. Kamu	2,784.7	3,175.8	3,638.5	4,035.8	3,942.7
3.2. Özel	6,674.3	8,824.9	8,786.3	8,770.3	9,272.7
4. Toplam Yurtiçi Tasarruflar (GSMH - Toplam Tüketim)	2,280.6	1,326.3	2,665.9	2,504.7	1,581.7

Kaynak: Devlet Planlama Örgütü

Table - 7 Balance of Resources and Expenditures

(Current Prices YTL)

2009	2010	2011	2012	2013	
5,516,650,698.8	6,064,972,476.0	6,849,670,948.7	7,141,086,689.3	7,664,753,456.2	1. Total Resources
5,415,280,698.8	5,649,534,936.0	6,559,174,528.7	6,915,831,629.3	7,579,403,276.2	1.1. GNP
101,370,000.0	415,437,540.0	290,496,420.0	225,255,060.0	85,350,180.0	1.2. Current Account Deficit
946,606,139.1	1,049,584,498.4	1,266,526,160.6	1,175,511,686.6	147,835,548.3	2. Total Investments
930,347,471.4	1,016,498,344.7	1,209,955,946.4	1,094,397,325.7	1,147,686,269.5	2.1. Fixed Capital
162,637,178.5	202,326,006.0	193,846,399.1	215,098,572.8	216,503,357.0	2.1.1. Public
767,710,292.9	814,172,338.6	1,016,109,547.2	879,298,752.9	931,182,912.4	2.1.2. Private
16,258,667.7	33,086,153.7	56,606,214.2	81,114,360.9	149,278.8	2.2. Changes in Stocks
22,475,490.8	-21,164,741.7	2,899,297.7	22,323,634.1	-32,798,571.4	2.2.1. Public
-6,216,823.1	54,250,895.4	53,706,916.5	58,790,726.8	32,947,850.3	2.2.2. Private
4,570,044,559.7	5,015,387,977.6	5,583,108,788.1	5,965,575,002.7	6,516,917,907.9	3. Total Consumption
1,487,589,785.8	962,203,916.8	1,059,244,715.5	1,491,823,326.0	1,341,301,971.7	3.1. Public
3,082,454,773.9	4,687,331,019.2	5,449,926,813.2	5,424,008,303.3	6,238,101,304.5	3.2. Private
845,236,139.1	634,146,958.4	976,065,740.6	950,256,626.6	1,062,485,368.3	4. Total Domestic Savings (GNP-Total Consumption)

Source: State Planning Organization

Table - 8 Balance of Resources and Expenditures

(1977 Prices YTL)

2009	2010	2011	2012	2013	
14,211.5	15,514.0	15,697.9	15,594.3	15,465.8	1. Total Resources
13,950.4	14,451.3	15,032.1	15,102.4	15,293.6	1.1. GNP
261.1	1,062.7	665.8	491.9	172.2	1.2. Current Account Deficit
2,438.6	2,684.8	2,902.7	2,567.0	2,316.1	2. Total Investments
2,396.7	2,600.2	2,772.9	2,389.9	2,135.8	2.1. Fixed Capital
419.0	517.5	444.3	469.7	436.9	2.1.1. Public
1,977.7	2,082.6	2,328.7	1,920.2	1,878.9	2.1.2. Private
41.9	84.6	129.7	177.1	0.3	2.2. Changes in Stocks
57.9	-54.1	6.6	48.7	-66.2	2.2.1. Public
-16.0	138.8	123.1	128.4	66.5	2.2.2. Private
11,773.0	12,829.2	12,795.2	13,027.3	13,149.8	3. Total Consumption
3,832.2	3,959.5	3,715.2	3,642.1	3,704.9	3.1. Public
7,940.8	8,869.7	9,080.0	9,385.2	9,444.8	3.2. Private
2,177.4	1,622.1	2,236.9	2,075.1	2,143.9	4. Total Domestic Savings (GNP-Total Consumption)

Source: State Planning Organization

Tablo - 9 Yatırım - Tasarruf Dengesi

	(Cari Fiyatlarla YTL)				
	2004	2005	2006	2007	2008
1. Toplam Yatırımlar	509,834,737.3	686,011,306.8	1,018,044,241.0	1,089,189,810.9	1,049,142,187.9
1.1. Sabit Sermaye	466,600,661.0	645,460,056.4	966,659,314.9	1,064,282,208.1	1,062,702,394.2
1.1.1. Kamu	146,665,039.8	174,763,841.3	308,425,110.5	262,142,369.9	267,192,187.9
1.1.2. Özel	319,935,621.2	470,696,215.1	658,234,204.4	802,139,838.2	795,510,206.3
1.2. Stok Değişimleri	43,234,076.3	40,551,250.4	51,384,926.1	24,907,602.8	-13,560,206.3
1.2.1. Kamu	1,095,183.5	6,335,935.7	7,362,476.2	-6,637,526.4	13,833,147.5
1.2.2. Özel	42,138,892.8	34,215,314.7	44,022,449.9	31,545,129.2	-27,393,353.8
2. Toplam Tasarruflar	509,834,737.3	686,011,306.8	1,018,044,241.0	1,089,189,810.9	1,049,142,187.9
2.1. Yurtiçi Tasarruflar	489,699,121.6	312,868,156.8	724,554,841.0	764,170,610.9	548,192,137.9
2.2. Dış Tasarruflar	20,135,615.7	373,143,150.0	293,489,400.0	325,019,200.0	500,950,050.0

Kaynak: Devlet Planlama Örgütü

Tablo - 10 Yatırım - Tasarruf Dengesi

	(1977 Fiyatlarıyla YTL)				
	2004	2005	2006	2007	2008
1. Toplam Yatırımlar	2,374.3	2,908.2	3,745.8	3,570.0	3,027.2
1.1. Sabit Sermaye	2,173.0	2,736.3	3,556.7	3,488.4	3,066.3
1.1.1. Kamu	683.0	740.9	1,134.8	859.2	771.0
1.1.2. Özel	1,490.0	1,995.4	2,421.9	2,629.1	2,295.4
1.2. Stok Değişimleri	201.3	171.9	189.1	81.6	-39.1
1.2.1. Kamu	5.1	26.9	27.1	-21.8	39.9
1.2.2. Özel	196.2	145.0	162.0	103.4	-79.0
2. Toplam Tasarruflar	2,374.3	2,908.2	3,745.8	3,570.0	3,027.2
2.1. Yurtiçi Tasarruflar	2,280.5	1,326.3	2,665.9	2,504.7	1,581.7
2.2. Dış Tasarruflar	93.8	1,581.9	1,079.9	1,065.3	1,445.4

Kaynak: Devlet Planlama Örgütü

Table - 9 Balance of Investment and Savings

(Current Prices YTL)

2009	2010	2011	2012	2013	
946,606,139.1	1,049,584,498.4	1,266,562,160.6	1,175,511,686.6	1,147,835,548.3	1. Total Investments
930,347,471.4	1,016,498,344.7	1,209,955,946.4	1,094,397,325.7	1,147,686,269.5	1.1. Fixed Capital
162,637,178.5	202,326,006.0	193,846,399.1	215,098,572.8	216,503,357.0	1.1.1. Public
767,710,292.9	814,172,338.6	1,016,109,547.2	879,298,752.9	931,182,912.4	1.1.2. Private
16,258,667.7	33,086,153.7	56,606,214.2	81,114,360.9	149,278.8	1.2. Changes in Stocks
22,475,490.8	-21,164,741.7	2,899,297.7	22,323,634.1	-32,798,571.4	1.2.1. Public
-6,216,823.1	54,250,895.4	53,706,916.5	58,790,726.8	32,947,850.3	1.2.2. Private
946,606,139.1	1,049,584,498.4	1,266,562,160.6	1,175,511,686.6	1,147,835,548.3	2. Total Savings
845,236,139.1	634,146,958.4	976,065,740.6	950,256,626.6	1,062,485,368.3	2.1. Domestic Savings
101,370,000.0	415,437,540.0	290,496,420.0	225,255,060.0	85,350,180.0	2.2. External Savings

Source: State Planning Organization

Table - 10 Balance of Investment and Savings

(1977 Prices YTL)

2009	2010	2011	2012	2013	
2,438.6	2,684.8	2,902.7	2,567.0	2,316.0	1. Total Investments
2,396.7	2,600.2	2,772.9	2,389.9	2,315.8	1.1. Fixed Capital
419.0	517.5	444.3	469.7	436.9	1.1.1. Public
1,977.7	2,082.6	2,328.7	1,920.2	1,878.9	1.1.2. Private
41.9	84.6	129.7	177.1	0.3	1.2. Changes in Stocks
57.9	-54.1	6.6	48.7	-66.2	1.2.1. Public
-16.0	138.8	123.1	128.4	66.5	1.2.2. Private
2,438.6	2,684.8	2,902.7	2,567.0	2,316.1	2. Total Savings
2,177.4	1,622.1	2,236.9	2,075.1	2,143.9	2.1. Domestic Savings
261.2	1,062.7	665.8	491.9	172.2	2.2. External Savings

Source: State Planning Organization

Tablo - 11 Sabit Sermaye Yatırımlarının Sektörel Dağılımı

Sektörler	(Cari Fiyatlarla YTL)				
	2004	2005	2006	2007	2008
1. Tarım	25,067,329.5	30,288,995.7	37,031,696.5	25,096,397.8	33,118,594.9
2. Sanayi	70,693,090.7	84,573,998.0	154,480,514.6	188,370,607.1	199,708,263.8
2.1. Taşocakçılığı	730,071.1	1,210,690.9	1,494,338.6	1,716,774.9	1,708,417.6
2.2. İmalat Sanayii	55,959,681.7	59,725,765.6	66,640,455.5	69,492,101.5	68,504,697.8
2.3. Elektrik-Su	14,003,337.9	23,637,541.5	86,345,720.5	117,161,730.7	129,495,148.4
3. İnşaat	21,259,857.0	43,258,675.4	34,687,310.1	20,913,624.0	14,016,685.2
4. Ticaret-Turizm	55,650,643.9	68,847,433.3	90,649,789.0	101,226,532.6	82,215,951.7
4.1. Ticaret	25,636,774.0	31,365,312.0	35,800,632.3	50,075,646.0	42,451,755.2
4.2. Turizm	30,013,869.9	37,482,121.3	54,849,156.7	51,150,886.6	39,764,196.6
5. Ulaştırma-Haberleşme	63,636,784.3	86,087,316.9	125,687,146.5	71,995,694.2	97,322,396.4
6. Mali Müesseseler	7,523,937.0	9,103,826.6	10,069,587.4	11,418,664.9	14,893,304.4
7. Konut Sahipliği	121,390,563.7	204,215,564.9	353,405,768.1	466,969,956.7	480,192,774.8
8. Serbest Meslek ve Hizmetler	22,014,944.9	25,959,956.5	49,092,282.6	88,371,762.0	78,727,130.8
9. Kamu Hizmetleri	79,363,510.0	93,124,289.1	111,555,220.1	89,918,968.8	62,507,292.3
9.1. Sağlık	3,884,086.9	4,354,195.6	17,287,059.8	31,222,881.6	9,153,660.3
9.2. Eğitim	41,220,862.1	54,362,203.5	51,152,845.3	10,076,850.3	9,135,207.9
9.3. Diğer	34,258,561.0	34,407,890.0	43,115,315.0	48,619,236.9	44,218,424.1
Toplam	466,600,661.0	645,460,056.4	966,659,314.9	1,064,282,208.1	1,062,702,394.2

Kaynak: Devlet Planlama Örgütü

Tablo - 12 Sabit Sermaye Yatırımlarının Sektörel Dağılımı

Sektörler	(1977 Fiyatlarıyla)				
	2004	2005	2006	2007	2008
1. Tarım	116.8	128.4	136.3	82.3	95.6
2. Sanayi	329.2	358.5	568.4	617.4	576.2
2.1. Taşocakçılığı	3.4	5.1	5.5	5.6	4.9
2.2. İmalat Sanayii	260.6	253.2	245.2	227.8	197.7
2.3. Elektrik-Su	65.2	100.2	317.7	384.0	373.6
3. İnşaat	99.0	183.4	127.6	68.5	40.4
4. Ticaret-Turizm	259.2	291.8	333.6	331.8	237.2
4.1. Ticaret	119.4	132.9	131.7	164.2	122.5
4.2. Turizm	139.8	158.9	201.9	167.6	114.7
5. Ulaştırma-Haberleşme	296.3	364.9	462.5	236.0	280.8
6. Mali Müesseseler	35.1	38.6	37.0	37.4	43.0
7. Konut Sahipliği	565.3	865.7	1,300.3	1,530.6	1,385.5
8. Serbest Meslek ve Hizmetler	102.5	110.1	180.6	289.7	227.2
9. Kamu Hizmetleri	369.6	394.9	410.4	294.7	180.4
9.1. Sağlık	18.1	18.5	63.6	102.3	26.4
9.2. Eğitim	192.0	230.5	188.2	33.0	26.4
9.3. Diğer	159.5	145.9	158.6	159.4	127.6
Toplam	2,173.0	2,736.3	3,556.7	3,488.4	3,066.3

Kaynak: Devlet Planlama Örgütü

Table - 11 Sectoral Distribution of Fixed Capital Investments

(Current Prices YTL)

2009	2010	2011	2012	2013	Sectors
27,058,393.7	49,136,362.5	51,058,138.0	54,190,288.2	71,537,594.6	1. Agriculture
103,835,938.2	142,669,112.1	196,282,358.0	182,282,511.4	134,113,143.5	2. Industry
1,353,085.8	1,853,415.9	2,319,707.3	2,205,459.9	1,854,196.6	2.1. Quarrying
55,099,169.6	74,974,778.2	92,957,201.0	89,860,006.5	77,731,990.8	2.2. Manufacturing
47,695,922.8	65,840,917.9	100,987,476.7	90,167,045.0	54,526,956.1	2.3. Electricity - Water
14,168,717.1	18,049,456.8	23,777,795.6	20,184,643.4	18,218,607.7	3. Construction
55,600,413.0	71,044,040.6	204,894,425.1	99,378,955.6	97,417,516.7	4. Trade-Tourism
30,587,555.0	41,947,129.6	58,843,622.4	49,882,216.0	33,006,557.3	4.1. Trade
25,012,858.0	29,096,911.0	146,050,802.6	49,505,739.6	64,410,959.4	4.2. Tourism
92,568,156.3	143,832,803.7	94,706,890.3	125,649,623.3	124,633,379.9	5. Transport-Communication
24,946,590.4	12,573,295.1	10,385,135.1	14,068,264.1	12,817,823.9	6. Financial Institutions
427,358,059.0	412,605,188.2	506,363,162.1	450,364,349.3	543,245,804.8	7. Ownership of Dwellings
122,716,573.1	134,437,539.1	68,177,274.4	71,148,838.9	57,283,971.0	8. Business and Personal Services
62,094,630.6	32,150,546.4	54,257,302.8	77,170,851.6	88,418,427.5	9. Public Services
4,595,513.2	4,344,688.1	3,353,271.2	2,465,583.9	7,953,661.8	9.1. Health
15,820,571.9	8,728,896.0	12,521,414.3	25,513,018.6	40,859,205.0	9.2. Education
41,678,545.6	19,076,962.3	38,382,617.2	49,192,249.1	39,605,560.8	9.3. Other
930,347,471.4	1,016,498,344.7	1,209,955,946.4	1,094,397,325.7	1,147,686,269.5	Total

Source: State Planning Organization

Table - 12 Sectoral Distribution of Fixed Capital Investments

(1977 Prices)

2009	2010	2011	2012	2013	Sectors
69.7	125.7	117.0	118.3	144.3	1. Agriculture
267.5	364.9	449.5	397.9	270.6	2. Industry
3.5	4.7	5.3	4.8	3.7	2.1. Quarrying
141.9	149.1	212.8	196.2	156.8	2.2. Manufacturing
122.9	168.4	231.4	196.9	110.0	2.3. Electricity - Water
36.5	46.2	54.5	44.1	36.8	3. Construction
143.2	181.7	465.0	217.0	196.6	4. Trade-Tourism
78.8	107.3	134.9	108.9	66.6	4.1. Trade
64.4	74.4	330.2	108.1	130.0	4.2. Tourism
238.4	367.9	222.9	274.4	251.5	5. Transport-Communication
64.3	32.2	23.8	30.7	25.9	6. Financial Institutions
1,100.9	1,055.4	1,160.5	983.5	1,096.2	7. Ownership of Dwellings
316.1	343.9	156.2	155.4	115.6	8. Business and Personal Services
160.0	82.2	130.8	168.5	178.4	9. Public Services
11.8	11.1	7.7	5.4	16.0	9.1. Health
40.8	22.3	28.7	55.7	82.4	9.2. Education
107.4	48.8	94.4	107.4	79.9	9.3. Other
2,396.7	2,600.2	2,780.3	2,389.9	2,316	Total

Source: State Planning Organization

Tablo - 13 Kamu Kesimi Genel Dengesi

	(Cari Fiyatlarla YTL)				
	2004	2005	2006	2007	2008
1. Kamu Gelirleri	1,023,173,117.8	1,253,787,499.2	1,524,019,743.1	1,739,498,572.7	1,986,206,692.7
1.1. Vergiler	525,684,886.4	657,295,032.8	794,702,097.2	996,159,121.1	1,206,494,159.2
1.1.1. Dolaysız Vergiler	240,527,997.5	245,324,036.9	329,772,826.9	405,928,010.1	505,712,752.0
1.1.2. Dolaylı Vergiler	285,156,888.9	411,970,995.9	464,929,270.3	590,231,111.0	700,781,407.2
1.2. Vergi Dışı Gelirler	172,432,165.6	242,667,510.5	235,432,009.5	272,454,557.7	214,656,369.2
1.3. Faktör ve Fon Gelirleri	325,056,065.8	353,824,955.9	493,885,636.4	470,884,893.9	565,056,164.3
2. Transferler	594,650,637.6	692,099,945.0	768,021,456.6	834,788,680.2	944,710,702.4
3. Kamu Harcanabilir Geliri	428,522,480.2	561,687,554.2	755,998,286.5	904,709,892.4	1,041,495,990.3
4. Kamu Cari Giderleri	597,959,676.7	749,134,768.6	988,884,634.8	1,231,306,843.6	1,366,456,132.8
5. Kamu Tasarrufu	-169,437,196.5	-187,447,214.4	-232,886,348.3	-326,596,951.2	-324,960,142.5
6. Kamu Yatırımı	147,760,223.3	181,099,777.0	315,787,586.7	255,504,843.5	281,025,335.4
6.1. Sabit Sermaye	146,665,039.8	174,763,841.3	308,425,110.5	262,142,369.9	267,192,187.9
6.2. Stok Değişimi	1,095,183.5	6,335,935.7	7,362,476.2	-6,637,526.4	13,833,147.5
7. Kamu Finansman Gereği	317,197,419.8	368,546,991.4	548,673,935.0	582,101,794.7	605,985,477.9

Kaynak: Devlet Planlama Örgütü

Tablo - 14 Kamu Kesimi Genel Dengesi

	(1977 Fiyatlarıyla YTL)				
	2004	2005	2006	2007	2008
1. Kamu Gelirleri	4,765.0	5,315.2	5,607.6	5,701.5	5,731.0
1.1. Vergiler	2,448.2	2,786.5	2,924.1	3,265.1	3,481.2
1.1.1. Dolaysız Vergiler	1,120.2	1,040.0	1,213.4	1,330.5	1,459.2
1.1.2. Dolaylı Vergiler	1,328.0	1,746.5	1,710.7	1,934.6	2,022.0
1.2. Vergi Dışı Gelirler	803.0	1,028.7	866.3	893.0	619.4
1.3. Faktör ve Fon Gelirleri	1,513.8	1,500.0	1,817.2	1,543.4	1,630.4
2. Transferler	2,769.3	2,934.1	2,825.9	2,736.2	2,725.9
3. Kamu Harcanabilir Geliri	1,995.7	2,381.1	2,781.7	2,965.3	3,005.1
4. Kamu Cari Giderleri	2,784.8	3,175.8	3,638.5	4,035.8	3,942.7
5. Kamu Tasarrufu	-789.1	-794.7	-856.8	-1,070.5	-937.6
6. Kamu Yatırımı	688.1	767.7	1,161.9	837.4	810.9
6.1. Sabit Sermaye	683.0	740.9	1,134.8	859.2	771.0
6.2. Stok Değişimi	5.1	26.9	27.1	-21.8	39.9
7. Kamu Finansman Gereği	1,477.2	1,562.4	2,018.7	1,907.9	1,748.5

Kaynak: Devlet Planlama Örgütü

Table - 13 General Balance of Public Sector

(Current Prices YTL)

2009	2010	2011	2012	2013	
1,862,053,831.4	2,089,052,564.2	2,303,325,976.6	2,773,761,861.1	2,796,812,940.2	1. Public Revenues
1,201,034,113.7	1,331,374,024.6	1,448,497,754.2	1,560,501,913.0	1,696,520,249.6	1.1. Taxes
572,624,962.6	604,622,382.7	619,980,327.6	652,646,298.6	730,436,386.9	1.1.1. Direct Taxes
628,409,151.1	726,751,642.0	828,517,426.6	907,855,614.4	966,083,862.8	1.1.2. Indirect Taxes
205,553,940.3	229,446,145.7	234,403,132.5	476,678,568.0	239,540,003.2	1.2. Income Other Than Taxes
455,465,777.4	528,232,393.8	620,425,089.9	736,581,380.1	860,752,687.4	1.3. Income From Factors and Funds
1,110,115,570.6	1,126,848,647.3	1,244,081,261.1	1,281,938,535.1	1,455,510,968.5	2. Transfers
751,938,260.8	962,203,916.8	1,059,244,715.5	1,491,823,326.0	1,341,301,971.7	3. Public Disposable Income
1,487,589,785.8	1,547,895,080.9	1,621,100,773.5	1,667,829,509.0	1,836,123,617.8	4. Public Current Expenditures
-735,651,525.0	-585,691,164.1	-561,856,058.0	-176,006,183.0	-494,821,646.1	5. Public Savings
185,112,669.3	181,161,264.3	196,745,696.8	237,422,206.9	183,704,785.6	6. Public Investments
162,637,178.5	202,326,006.0	193,846,399.1	215,098,572.8	216,503,357.0	6.1. Fixed Capital
22,475,490.8	-21,164,741.7	2,899,297.7	22,323,634.1	-32,798,571.4	6.2. Changes in Stocks
920,764,194.3	766,852,428.4	758,601,754.8	413,428,389.9	678,526,431.7	7. Public Deficit

Source: State Planning Organization

Table - 14 General Balance of Public Sector

(1977 Prices YTL)

2009	2010	2011	2012	2013	
4,796.9	5,343.7	5,278.7	6,057.2	5,643.4	1. Public Revenues
3,094.0	3,405.6	3,319.6	3,407.7	3,423.2	1.1. Taxes
1,475.1	1,546.6	1,420.9	1,425.2	1,473.9	1.1.1. Direct Taxes
1,618.9	1,859.0	1,898.8	1,982.5	1,949.3	1.1.2. Indirect Taxes
529.6	586.9	537.2	1,040.9	483.3	1.2. Income Other Than Taxes
1,173.3	1,351.2	1,421.9	1,608.5	1,736.8	1.3. Income From Factors and Funds
2,859.8	2,882.4	2,851.1	2,799.4	2,936.9	2. Transfers
1,937.1	2,461.3	2,427.5	3,257.8	2,706.5	3. Public Disposable Income
3,832.2	3,959.5	3,715.2	3,642.1	3,704.9	4. Public Current Expenditures
-1,895.1	-1,498.2	-1,287.6	-384.4	-998.4	5. Public Savings
476.9	463.4	450.9	518.5	370.7	6. Public Investments
419.0	517.5	444.3	469.7	436.9	6.1. Fixed Capital
57.9	-54.1	6.6	48.7	-66.2	6.2. Changes in Stocks
2,372.0	1,961.6	1,738.5	902.8	1,369.1	7. Public Deficit

Source: State Planning Organization

Tablo - 15 Özel Kesim Genel Dengesi

	(Cari Fiyatlarla YTL)				
	2004	2005	2006	2007	2008
1. Özel Harcanabilir Gelir	2,092,284,267.2	2,582,012,057.4	3,345,388,904.0	3,766,545,993.5	4,086,838,144.1
2. Özel Tüketim	1,433,147,949.1	2,081,696,686.2	2,387,947,714.7	2,675,778,431.4	3,213,685,863.7
3. Özel Tasarruf	659,136,318.1	500,315,371.2	957,441,189.3	1,090,767,562.1	873,152,280.4
4. Özel Yatırım	362,074,514.0	504,911,529.8	702,256,654.3	833,684,967.4	768,116,852.5
4.1. Sabit Sermaye	319,935,621.2	470,696,215.1	658,234,204.4	802,139,838.2	795,510,206.3
4.2. Stok Değişimi	42,138,892.8	34,215,314.7	44,022,449.9	31,545,129.2	-27,393,353.8
5. Kamu Kesimine İkras	297,061,804.1	-4,596,158.6	255,184,535.0	257,082,594.7	105,035,427.9

Kaynak: Devlet Planlama Örgütü

Tablo - 16 Özel Kesim Genel Dengesi

	(1977 Fiyatlarıyla YTL)				
	2004	2005	2006	2007	2008
1. Özel Harcanabilir Gelir	9,743.9	10,945.9	12,309.1	12,345.5	11,792.1
2. Özel Tüketim	6,674.3	8,824.9	8,786.2	8,770.3	9,272.7
3. Özel Tasarruf	3,069.7	2,121.0	3,522.8	3,575.2	2,519.4
4. Özel Yatırım	1,686.2	2,140.4	2,583.9	2,732.6	2,216.3
4.1. Sabit Sermaye	1,490.0	1,995.4	2,421.9	2,629.2	2,295.4
4.2. Stok Değişimi	196.2	145.0	162.0	103.4	-79.0
5. Kamu Kesimine İkras	1,383.4	-19.4	938.9	842.6	303.1

Kaynak: Devlet Planlama Örgütü

Table - 15 General Balance of Private Sector

(Current Prices YTL)

2009	2010	2011	2012	2013	
4,663,342,438.0	4,687,331,019.2	5,499,929,813.2	5,424,008,303.3	6,238,101,304.5	1. Private Disposable Income
3,082,454,773.9	3,467,492,896.7	3,962,008,014.7	4,297,745,493.7	4,680,794,290.1	2. Private Consumption
1,580,887,664.1	1,219,838,122.5	1,537,921,798.5	1,126,262,809.6	1,557,307,014.4	3. Private Savings
761,493,469.8	868,423,234.0	1,069,816,463.7	938,089,479.7	964,130,762.7	4. Private Investments
767,710,292.9	814,172,338.6	1,016,109,547.2	879,298,752.9	931,182,912.4	4.1. Fixed Capital
-6,216,823.1	54,250,895.4	53,706,916.5	58,790,726.8	32,947,850.3	4.2. Changes in Stocks
819,394,194.3	351,414,888.5	468,105,334.8	188,173,329.9	593,176,251.7	5. Transfer to Public Sector

Source: State Planning Organization

Table - 16 General Balance of Private Sector

(1977 Prices YTL)

2009	2010	2011	2012	2013	
12,013.4	11,990.0	12,604.6	11,844.6	12,587.1	1. Private Disposable Income
7,940.8	8,869.7	9,080.0	9,385.2	9,444.8	2. Private Consumption
4,072.6	3,120.3	3,524.6	2,459.5	3,142.3	3. Private Savings
1,961.7	2,221.4	2,451.8	2,048.5	1,945.4	4. Private Investments
1,977.7	2,082.6	2,328.7	1,920.2	1,878.9	4.1. Fixed Capital
-16.0	138.8	123.1	128.4	66.5	4.2. Changes in Stocks
2,110.9	898.9	1,072.8	410.9	1,196.9	5. Transfer to Public Sector

Source: State Planning Organization

Tablo - 17 Devlet Bütçe Dengesi

	(Cari Fiyatlarla YTL)				
	2004	2005	2006	2007	2008
I.BÜTÇE GELİRLERİ	1,113,058,470.5	1,249,910,179.1	1,509,540,794.2	1,912,021,359.7	1,928,800,834.9
1. Yerel Gelirler	937,103,669.8	1,042,305,418.6	1,215,615,338.9	1,628,462,492.5	1,634,990,825.2
1.1. Vergi Gelirleri	508,382,819.8	635,864,588.4	765,387,680.3	954,150,300.4	1,153,905,700.2
1.1.1. Dolaysız Vergiler	237,740,888.4	241,992,465.0	323,571,931.7	392,126,403.8	489,505,850.5
1.1.2. Dolaylı Vergiler	270,641,931.4	393,872,123.4	441,815,748.5	562,023,896.6	664,399,849.7
1.2. Diğer Gelirler	151,544,409.7	215,236,518.1	193,558,294.4	225,360,264.2	162,612,833.4
1.3. Fon Gelirleri	277,176,440.3	191,204,312.1	256,669,364.3	448,951,928.0	318,472,291.6
2. Dış Yardımlar	175,954,800.7	207,604,760.5	293,925,455.2	283,558,867.2	293,810,009.7
2.1. Türkiye Cumhuriyeti	175,694,492.5	207,526,730.8	293,778,605.0	283,317,708.4	293,565,115.0
2.2. Diğer	260,308.3	78,029.8	146,850.2	241,158.8	244,894.7
II. BÜTÇE GİDERLERİ	1,261,834,304.7	1,500,220,978.1	1,923,710,074.6	2,125,063,562.9	2,364,729,328.4
1. Cari Giderler	436,157,692.2	571,203,866.0	742,526,703.9	932,560,258.6	1,024,958,715.7
1.1. Personel Giderleri	374,790,266.1	483,139,433.7	624,001,846.5	756,015,536.9	866,264,412.7
1.2. Diğer Cari Giderler	61,367,426.1	88,064,432.3	118,524,857.4	176,544,721.7	158,694,303.0
2. Transferler	617,197,819.0	700,234,763.2	784,546,989.9	844,881,606.6	974,597,265.7
2.1. Sosyal Transferler	289,221,703.0	-	-	-	-
2.2. Diğer Transferler	327,976,116.1	-	-	-	-
3. Savunma	78,000,000.0	80,145,649.0	118,843,456.0	120,047,875.5	146,813,407.4
4. Yatırımlar	130,478,793.4	148,636,700.0	277,792,924.8	227,573,822.2	218,359,939.6
III. BÜTÇE DENGESİ	-148,775,834.2	-250,310,799.0	-414,169,280.4	-213,042,203.2	-435,928,493.5
IV. AVANSLAR	-	-	-	-74,045,113.1	-38,458,327.5
IV. FİNANSMAN DENGESİ	-148,775,834.2	-250,310,799.0	-414,169,280.4	-287,087,316.3	-474,386,821.0
VI. FİNANSMAN	148,775,834.2	250,310,799.0	414,169,280.4	287,087,316.2	474,386,821.0
1. Türkiye Cumhuriyeti Kredileri	164,314,431.9	293,182,876.5	320,091,287.0	271,361,365.1	432,724,659.3
2. İç Borçlanma	-15,538,597.7	-42,872,077.5	94,077,993.4	15,725,951.1	41,662,161.8
GSMH	2,520,806,747.4	3,143,699,611.6	4,101,387,190.5	4,671,255,885.9	5,128,334,134.4

Kaynak: Maliye Bakanlığı, Devlet Planlama Örgütü.

Tablo - 18 Devlet Bütçe Dengesi

	(1977 Fiyatlarıyla)				
	2004	2005	2006	2007	2008
I.BÜTÇE GELİRLERİ	5,251.0	5,298.7	5,554.2	6,267.0	5,565.3
1. Yerel Gelirler	4,420.9	4,418.6	4,472.8	5,337.6	4,717.6
1.1. Vergi Gelirleri	2,398.4	2,695.6	2,816.2	3,127.4	3,329.5
1.1.1. Dolaysız Vergiler	1,121.6	1,025.9	1,190.6	1,285.3	1,412.4
1.1.2. Dolaylı Vergiler	1,276.8	1,669.7	1,625.6	1,842.1	1,917.0
1.2. Diğer Gelirler	714.9	912.4	712.2	738.7	469.2
1.3. Fon Gelirleri	1,307.6	810.6	944.4	1,471.5	918.9
2. Dış Yardımlar	830.1	880.1	1,081.5	929.4	847.8
2.1. Türkiye Cumhuriyeti	828.9	879.8	1,080.9	928.6	847.0
2.2. Diğer	1.2	0.3	0.5	0.8	0.7
II. BÜTÇE GİDERLERİ	5,952.9	6,359.8	7,078.1	6,965.2	6,823.1
1. Cari Giderler	2,057.6	2,421.5	2,732.1	3,056.6	2,957.4
1.1. Personel Giderleri	1,768.1	2,048.2	2,296.0	2,478.0	2,499.5
1.2. Diğer Cari Giderler	289.5	373.3	436.1	578.7	457.9
2. Transferler	2,911.7	2,968.5	2,886.7	2,769.2	2,812.1
2.1. Sosyal Transferler	1,364.4	-	-	-	-
2.2. Diğer Transferler	1,547.3	-	-	-	-
3. Savunma	368.0	339.8	437.3	393.5	423.6
4. Yatırımlar	615.6	630.1	1,022.1	745.9	630.1
III. BÜTÇE DENGESİ	-701.9	-1,061.1	-1,523.9	-698.3	-1,257.8
IV. AVANSLAR	-	-	-	-242.7	-111.0
IV. FİNANSMAN DENGESİ	-701.9	-1,061.1	-1,523.9	-941.0	-1,368.8
VI. FİNANSMAN	701.9	1,061.2	1,523.9	941.0	1,368.8
1. Türkiye Cumhuriyeti Kredileri	775.2	1,242.9	1,177.7	229.4	1,248.6
2. İç Borçlanma	-73.3	-181.7	346.2	51.5	120.2
GSMH	11,739.6	13,327.0	15,090.7	15,310.8	14,797.2

Kaynak: Maliye Bakanlığı, Devlet Planlama Örgütü.

Table - 17 Balance of State Revenues and Expenditures

(Current Prices YTL)

2009	2010	2011	2012	2013	
1,850,579,976.4	2,094,884,139.9	2,342,746,054.0	2,733,508,126.6	2,717,380,643.9	I. BUDGET REVENUES
1,577,760,033.6	1,791,246,833.6	1,952,147,952.7	2,338,729,397.3	2,286,524,201.4	1. Local Revenues
1,145,161,545.7	1,272,098,377.5	1,380,481,623.0	1,492,078,040.6	1,624,906,810.5	1.1. Tax Revenues
554,007,757.4	584,146,946.7	597,912,540.8	630,278,450.1	705,418,509.6	1.1.1. Direct Taxes
591,153,788.3	687,951,430.9	782,569,082.2	861,799,590.5	919,488,301.0	1.1.2. Indirect Taxes
148,866,902.3	170,387,426.1	165,543,256.4	409,626,933.9	159,919,036.2	1.2. Other Income
283,731,585.6	348,761,029.9	406,123,073.3	437,024,422.8	501,698,354.7	1.3. Fund Revenues
272,819,942.9	303,637,306.3	390,598,101.3	394,778,729.3	430,856,442.4	2.Foreign Aid
272,695,375.9	303,342,252.5	390,140,652.0	394,745,009.0	429,681,473.0	2.1. Republic of Turkey
124,566.9	295,053.8	457,449.3	33,720.3	1,174,969.4	2.2. Other
2,575,108,349.3	2,660,956,990.0	2,844,717,192.2	2,964,278,216.8	3,261,442,097.7	II. BUDGET EXPENDITURES
1,103,415,414.9	1,140,049,984.5	1,159,028,230.4	1,199,857,540.4	1,295,770,450.0	1. Current Expenditures
936,237,770.8	947,401,504.3	989,460,966.1	1,016,009,248.8	1,097,304,837.3	1.1. Personnel Expenditures
167,177,644.1	192,648,480.2	169,567,264.2	183,848,291.6	198,465,612.7	1.2. Other Current Expenditures
1,154,300,902.4	1,169,441,199.0	1,254,351,944.3	1,319,785,540.6	1,458,418,886.8	2. Transfers
-	-	-	-	-	2.1. Social Transfers
-	-	-	-	-	2.2. Other Transfers
167,395,579.2	163,327,202.5	199,979,873.2	194,687,299.6	201,795,988.0	3. Defence
149,996,452.8	188,138,604.0	231,357,144.3	249,947,836.2	305,456,773.0	4. Investments
-724,528,372.8	-566,072,850.1	-501,971,138.2	-230,770,090.2	-544,061,453.9	III. BUDGET BALANCE
-34,657,432.4	-	-	-	-	IV. ADVANCES
-759,185,805.2	-566,072,850.1	-501,971,138.2	-230,770,090.2	-544,061,453.9	V. FISCAL BALANCE
759,185,805.2	566,072,850.1	501,971,138.2	230,770,090.2	544,061,453.9	VI. FINANCE
659,171,935.6	548,079,759.3	450,079,782.0	406,951,862.2	498,700,374.4	1. Credits from Republic of Turkey
100,013,869.7	17,993,090.8	51,891,356.2	-176,181,772.1	45,361,079.4	2. Internal Loans
5,415,280,698.8	5,649,534,936.0	6,559,174,528.7	6,915,831,629.3	7,579,403,276.2	GNP

Source : Ministry of Finance, State Planning Organization

Table - 18 Balance of State Revenues and Expenditures

(1977 Prices YTL)

2009	2010	2011	2012	2013	
4,767.3	5,358.6	5,369.0	5,969.3	5,483.1	I. BUDGET REVENUES
4,064.5	4,581.9	4,473.9	5,107.2	4,613.7	1. Local Revenues
2,950.1	3,254.0	3,163.7	3,258.3	3,278.7	1.1. Tax Revenues
1,427.2	1,494.2	1,370.3	1,376.4	1,423.4	1.1.1. Direct Taxes
1,522.9	1,759.8	1,793.5	1,882.0	1,855.3	1.1.2. Indirect Taxes
383.4	435.8	379.4	894.5	322.7	1.2. Other Income
731.0	892.1	930.7	954.4	1,012.3	1.3. Fund Revenues
702.8	776.7	895.2	862.1	869.4	2.Foreign Aid
702.5	775.9	894.1	862.0	867.0	2.1. Republic of Turkey
0.3	0.8	1.1	0.1	2.4	2.2. Other
6,633.8	6,806.6	6,519.4	6,473.2	6,580.9	II. BUDGET EXPENDITURES
2,842.5	2,916.2	2,656.2	2,620.2	2,614.6	1. Current Expenditures
2,411.9	2,423.4	2,267.6	2,218.7	2,214.1	1.1. Personnel Expenditures
430.7	492.8	388.6	401.5	400.5	1.2. Other Current Expenditures
2,973.6	2,991.4	2,874.7	2,882.1	2,942.8	2. Transfers
-	-	-	-	-	2.1. Social Transfers
-	-	-	-	-	2.2. Other Transfers
431.2	417.8	458.3	425.2	407.2	3. Defence
386.4	481.3	530.2	545.8	616.4	4. Investments
-1,866.5	-1,448.0	-1,150.4	-503.9	-1,097.8	III. BUDGET BALANCE
-89.3	-	-	-	-	IV. ADVANCES
-1,955.8	-1,448.0	-1,150.4	-503.9	-1,097.8	V. FISCAL BALANCE
1,955.8	1,448.0	1,150.4	503.9	1,097.8	VI. FINANCE
1,698.1	1,402.0	1,031.5	888.7	1,006.3	1. Credits from Republic of Turkey
257.6	46.0	118.9	-384.7	91.5	2. Internal Loans
13,950.4	14,451.3	15,032.1	15,102.4	15,293.6	GNP

Source : Ministry of Finance, State Planning Organization

Tablo - 19 Devlet Bütçe Dengesi

	(GSMH Yüzdesi)				
	2004	2005	2006	2007	2008
I. BÜTÇE GELİRLERİ	44.7	39.8	36.8	40.9	37.6
1. Yerel Gelirler	37.7	33.2	29.6	34.9	31.9
1.1. Vergi Gelirleri	20.4	20.2	18.7	20.4	22.5
1.1.1. Dolaysız Vergiler	9.6	7.7	7.9	8.4	9.5
1.1.2. Dolaylı Vergiler	10.9	12.5	10.8	12.0	13.0
1.2. Diğer Gelirler	6.1	6.8	4.7	4.8	3.2
1.3. Fon Gelirleri	11.1	6.1	6.3	9.6	6.2
2. Dış Yardımlar	7.1	6.6	7.2	6.1	5.7
2.1. Türkiye Cumhuriyeti	7.1	6.6	7.2	6.1	5.7
2.2. Diğer
II. BÜTÇE GİDERLERİ	50.7	47.7	46.9	45.5	46.1
1. Cari Giderler	17.5	18.2	18.1	20.0	20.0
1.1. Personel Giderleri	15.1	15.4	15.2	16.2	16.9
1.2. Diğer Cari Giderler	2.5	2.8	2.9	3.8	3.1
2. Transferler	24.8	22.3	19.1	18.1	19.0
2.1. Sosyal Transferler	11.6	-	-	-	-
2.2. Diğer Transferler	13.2	-	-	-	-
3. Savunma	3.1	2.5	2.9	2.6	2.9
4. Yatırımlar	5.2	4.7	6.8	4.9	4.3
III. BÜTÇE DENGESİ	-6.0	-7.9	-10.1	-4.6	-8.5
IV. AVANSLAR	-	-	-	-1.6	-0.7
IV. FİNANSMAN DENGESİ	-6.0	-7.9	-10.1	-6.1	-9.3
VI. FİNANSMAN	6.0	7.9	10.1	6.1	9.3
1. Türkiye Cumhuriyeti Kredileri	6.6	9.3	7.8	5.8	8.4
2. İç Borçlanma	-0.6	-1.4	2.3	0.3	0.8

Kaynak: Devlet Planlama Örgütü.

Tablo - 20 Banka Mevduatları¹

	(YTL)				
Mevduat Türü	2004	2005	2006	2007	2008
1. Türk Lirası Mevduatlar	1,388,190,156.0	1,821,521,200.7	2,301,709,471.1	2,667,285,243.7	3,183,811,880.2
2. Döviz Mevduatları	1,840,523,806.0	1,811,218,725.9	2,379,560,313.4	2,270,062,971.1	2,379,390,431.4
Toplam	3,228,713,962.0	3,632,739,926.6	4,681,269,784.5	4,937,348,214.8	5,563,202,311.6

¹2003 yılından önce bankalararası mevduat dahil değildir.

Kaynak: KKTC Merkez Bankası, Devlet Planlama Örgütü.

Table - 19 Balance of State Revenues and Expenditures

(Share in GNP)

2009	2010	2011	2012	2013	
34.2	37.1	35.7	39.5	35.9	I. BUDGET REVENUES
29.1	31.7	29.8	33.8	30.2	1. Local Revenues
21.1	22.5	21.0	21.6	21.4	1.1. Tax Revenues
10.2	10.3	9.1	9.1	9.3	1.1.1. Direct Taxes
10.9	12.2	11.9	12.5	12.1	1.1.2. Indirect Taxes
2.7	3.0	2.5	5.9	2.1	1.2. Other Income
5.2	6.2	6.2	6.3	6.6	1.3. Fund Revenues
5.0	5.4	6.0	5.7	5.7	2.Foreign Aid
5.0	5.4	5.9	5.7	5.7	2.1. Republic of Turkey
..	2.2. Other
47.6	47.1	43.4	42.9	43	II. BUDGET EXPENDITURES
20.4	20.2	17.7	17.3	17.1	1. Current Expenditures
17.3	16.8	15.1	14.7	14.5	1.1. Personnel Expenditures
3.1	3.4	2.6	2.7	2.6	1.2. Other Current Expenditures
21.3	20.7	19.1	19.1	19.2	2. Transfers
-	-	-	-	-	2.1. Social Transfers
-	-	-	-	-	2.2. Other Transfers
3.1	2.9	3.0	2.8	2.7	3. Defence
2.8	3.3	3.5	3.6	4	4. Investments
-13.4	-10.0	-7.7	-3.3	-7.2	III. BUDGET BALANCE
-0.6	0.0	0.0	0.0	0.0	IV. ADVANCES
-14.0	-10.0	-7.7	-3.3	-7.2	V. FISCAL BALANCE
14.0	10.0	7.7	3.3	7.2	VI. FINANCE
12.2	9.7	6.9	5.9	6.6	1. Credits from Republic of Turkey
1.8	0.3	0.8	-2.5	0.6	2. Internal Loans

Source : State Planning Organization

Table - 20 Bank Deposits¹

(YTL)

2009	2010	2011	2012	2013	Type of Deposits
3,951,040,317.5	4,372,048,000.0	5,228,926,000.0	5,522,480,000.0	6,359,392,000.0	1. Turkish Lira Deposits
2,554,027,460.2	2,694,872,000.0	3,174,030,000.0	3,761,612,000.0	4,964,235,000.0	2. Foreign Currency Deposits
6,505,067,777.7	7,066,920,000.0	8,402,956,000.0	9,284,092,000.0	11,323,627,000.0	Total

¹Before 2003 interbank deposits are not included.

Source: Central Bank of TRNC, State Planning Organization.

Tablo - 21 Banka Plasmanlarının Sektörel Dağılımı

Sektörler	(YTL)				
	2004	2005	2006	2007	2008
1. Kamu Kurum ve Kuruluşları	480,546,727.0	550,228,705.9	774,505,521.6	889,522,411.6	1,134,577,882.1
2. Tarım	7,549,728.0	8,020,849.6	12,237,015.4	12,361,508.4	15,030,044.7
3. Sanayi	6,891,552.0	5,449,898.3	4,676,239.4	7,460,279.1	9,369,746.1
4. Nakliye ve Ulaşım	1,755,784.0	14,386,490.4	8,999,512.7	13,738,420.2	16,482,728.6
5. Yurtiçi ve Yurtdışı Ticaret	260,780,135.0	429,522,517.3	479,155,763.3	553,678,324.1	573,456,001.7
6. Bina ve İnşaat	34,524,407.0	64,886,021.9	107,001,070.1	118,170,144.1	112,794,326.2
7. Turizm	6,145,152.0	2,924,765.1	15,925,745.2	19,450,947.8	16,219,692.7
8. Şahsi ve Mesleki Borçlar	374,344,084.0	494,505,355.3	918,797,886.5	1,120,336,210.2	1,553,165,397.9
9. İskonto Senetleri	-	-	-	-	-
Toplam	1,172,537,569.0	1,569,924,603.8	2,321,298,754.1	2,734,718,245.5	3,431,095,820.0

Kaynak: KKTC Merkez Bankası, Devlet Planlama Örgütü

Tablo - 22 Ödemeler Dengesi

Sektörler	(Milyon ABD \$)				
	2004	2005	2006	2007	2008
1. Cari İşlemler					
1.1. Dış Ticaret					
1.1.1. Dışsatım	62.0	68.1	68.1	83.7	83.7
1.1.2. Dışalım	853.1	1,255.5	1,376.2	1,539.2	1,680.7
Dış Ticaret Dengesi	-791.1	-1,187.4	-1,308.1	-1,455.5	-1,597.0
GSYİH'daki Payı (%)	-46.0	-52.2	-47.3	-41.0	-40.4
1.2. Görünmeyen İşlemler					
1.2.1. Turizm (Net)	288.3	328.8	303.2	381.0	383.7
1.2.2. Diğer Görünmeyenler (Net)	488.7	582.3	801.3	824.1	823.0
Görünmeyen İşlemler Dengesi	777.0	911.1	1,104.5	1,205.1	1,206.7
Cari İşlemler Dengesi	-14.1	-276.3	-203.6	-250.4	-390.3
GSYİH'daki Payı (%)	-0.8	-12.2	-7.4	-7.1	-9.9
2. Sermaye Hareketleri					
2.1. TC Yardım ve Kredileri	175.3	217.2	218.0	209.1	337.1
2.2. Diğer Dış Yardımlar	-	-	-	-	-
2.4. Kısa Vadeli Diğer Sermaye Hareketleri (Net)	79.4	66.0	172.9	125.9	73.4
Sermaye Hareketleri Dengesi	254.7	283.2	390.9	335.0	410.5
Genel Denge	240.6	6.9	187.3	84.6	20.2
GSYİH'daki Payı (%)	14.0	0.3	6.8	2.4	0.5
3. Rezerv Hareketleri (- Artış, + Azalış)	-322.0	-53.0	-433.3	-41.2	269.5
4. Net Hata ve Noksan	81.4	46.1	246.0	-43.4	-289.7
Ortalama ABD \$ Kuru (1\$=TL)¹	1,428,057.9	1.4	1.4	1.3	1.3

¹2005 yılından itibaren ortalama döviz kuru YTL olarak belirtilmiştir.

Kaynak: Devlet Planlama Örgütü

Table - 21 Sectoral Distribution of Bank Loans

					(YTL)
2009	2010	2011	2012	2013	Sectors
1340754904.9	1487727931.8	1766518000.0	2036222100.0	2,113,222,000.0	1. Public Enterprises and Institutions
18871141.4	33654722.7	71784000.0	32659900.0	90,545,000.0	2. Agriculture
24373249.7	87862933.9	104373000.0	111869300.0	202,662,000.0	3. Manufacturing
7040200.5	22271181.7	45537000.0	59889600.0	94,371,000.0	4. Transportation
608601864.8	731182366.5	1276732000.0	1353312300.0	1,789,904,000.0	5. Foreign and Domestic Trade
92173062.9	127065324.8	350843000.0	357291300.0	558014000	6. Building and Construction
5575910.1	45931352.8	71618000.0	80690000.0	169050000.0	7. Tourism
1878906462.8	2082757948.7	2180450000.0	2746080100.0	3361063000.0	8. Business and Personal Loans
-	-	-	-	-	9. Bills Discounted
3976296797.2	4618453762.7	5867855000.0	6778014600.0	8378831000.0	Total

Source: Central Bank of TRNC, State Planning Organization

Table - 22 Balance of Payments

					(Million US \$)
2009	2010	2011	2012	2013	Sectors
1. Current Accounts					
1.1. Foreign Trade					
71.1	96.4	152.9	122.4	120.7	1.1.1. Exports
1,326.2	1,604.2	1,699.9	1,705.3	1,699.4	1.1.2. Imports
-1,255.1	-1,507.8	-1,547.0	-1,582.9	-1,578.7	Foreign Trade Balance
-36.1	-40.5	-39.9	-41.0	-39.6	Share in GDP (%)
1.2. Invisibles Accounts					
390.7	405.8	459.4	571.9	613.4	1.2.1. Tourism (Net)
799.0	826.2	914.5	885.9	920.6	1.2.2. Other Invisibles (Net)
1,189.7	1,232.0	1,373.9	1,457.8	1,534.0	Invisibles Accounts Balance
-65.4	-275.8	-173.1	-125.1	-44.7	Current Accounts Balance
-1.9	-7.4	-4.5	-3.2	-1.1	Share in GDP (%)
2. Capital Movements					
425.3	363.9	268.2	226.1	261.2	2.1. Foreign Aid and Loans by Turkey
-	-	-	-	-	2.2. Other Foreign Aid
69.7	74.6	58.3	120.1	-1.5	2.3. Other Short Term Capital Movements (Net)
495.0	438.5	326.5	346.2	259.7	Capital Movements Balance
429.6	162.7	153.4	221.1	215.0	General Balance
12.4	4.4	4.0	5.7	5.4	Share in GDP (%)
-172.1	-94.4	-47.3	-340.8	-219.9	3. Change In Reserves (- Increase, + Decrease)
-257.5	-68.3	-106.1	119.7	4.9	4. Net Errors and Omissions
1.5	1.5	1.6782	1.8006	1.9094	Average US\$ Exchange Rate¹

¹ In 2005 average exchange rate is indicated as New Turkish Lira.

Source: State Planning Organization

Tablo - 23 Ülkeler İtibarıyla Dış Ticaret

Ülkeler	(Milyon ABD \$)									
	2004		2005		2006		2007		2008	
	İth. Imp.	İhr. Exp.	İth. Imp.	İhr. Exp.	İth. Imp.	İhr. Exp.	İth. Imp.	İhr. Exp.	İth. Imp.	İhr. Exp.
1.Türkiye	512.4	28.7	817.4	34.2	947.0	30.9	1,045.0	48.9	1,172.5	41.8
2.Diğer Ülkeler	340.7	33.3	438.1	33.9	429.2	37.2	494.2	34.8	508.2	41.9
2.1.AB Ülkeleri	224.4	15.2	264.3	18.6	247.1	12.9	248.2	13.2	236.3	17.2
2.1.1.Birleşik Krallık	91.0	13.5	101.4	13.8	87.1	8.4	71.6	7.4	58.3	4.6
2.1.2.Diğer AB Ülkeleri	133.4	1.7	162.9	4.8	160.0	4.5	176.6	5.8	178.0	12.6
2.2.Orta Doğu Ülkeleri	23.5	4.3	42.0	6.8	57.1	9.2	52.2	6.9	49.4	12.7
2.3.Uzak Doğu Ülkeleri	40.7	-	52.4	-	43.8	-	58.9	-	58.4	-
2.4.ABD	7.1	-	8.3	0.1	9.8	0.1	16.0	..	11.7	0.1
2.5.Diğer Ülkeler	45.0	13.8	71.1	8.4	71.4	15.0	118.6	14.7	152.4	11.9
Toplam	853.1	62.0	1,255.5	68.1	1,376.2	68.1	1,539.2	83.7	1,680.7	83.7

Kaynak: Devlet Planlama Örgütü

Tablo - 24 Dışsatımın Yapısı

	(Milyon ABD \$)									
	2004	%	2005	%	2006	%	2007	%	2008	%
1.Tarımsal Ürünler	21.1	34.0	24.6	36.1	24.1	35.4	30.7	36.7	28.4	33.9
1.1.Narenciye	20.1	32.4	20.2	29.6	19.1	28.0	22.7	27.1	20.5	24.5
1.2.Patates	-	-	1.0	1.5	2.1	3.1	3.0	3.6	4.6	5.5
1.3.Canlı Hayvan	-	-	-	-	-	-	-	-	-	-
1.4.Diğer	1.0	1.6	3.4	5.0	2.9	4.3	5.0	6.0	3.3	3.9
2.Sanayi Ürünleri	39.4	63.6	41.1	60.4	39.1	57.4	44.9	53.6	47.1	56.3
2.1.İşlenmiş Tarım ve Gıda	24.9	40.2	27.8	40.8	26.0	38.2	31.4	37.5	32.8	39.2
2.2.Konfeksiyon	11.7	18.9	10.0	14.7	7.8	11.4	6.8	8.1	3.7	4.4
2.3.Diğer	2.8	4.5	3.3	4.9	5.3	7.8	6.7	8.0	10.6	12.7
3.Mineraler	1.5	2.4	2.4	3.5	4.9	7.2	8.1	9.7	8.2	9.8
Toplam	62.0	100.0	68.1	100.0	68.1	100.0	83.7	100.0	83.7	100.0

Kaynak: Devlet Planlama Örgütü

Tablo - 25 Ana Mal Grupları İtibarıyla Dışalım

	(Milyon ABD \$)									
	2004	%	2005	%	2006	%	2007	%	2008	%
1.Yiyecek ve Canlı Hayvan	80.3	9.4	110.5	8.8	113.9	8.3	162.9	10.6	226.2	13.5
2. İçki ve Tütün	45.2	5.3	54.4	4.3	59.5	4.3	72.9	4.7	87.8	5.2
3. Yakıttan Gayrı Yenmeyen	13.5	1.6	21.0	1.7	23.3	1.7	26.0	1.7	26.9	1.6
4. Mineral Yakıtlar, Yağlayıcı Madde ve İlgili Olanlar	68.9	8.1	172.8	13.8	232.2	16.9	262.6	17.1	331.4	19.7
5. Hayvan ve Sebze Yağları	5.3	0.6	6.8	0.5	7.1	0.5	9.2	0.6	15.7	0.9
6. Kimyevi Maddeler	66.0	7.7	93.0	7.4	99.9	7.3	117.9	7.7	125.6	7.5
7. Yapıldığı Maddenin Cinsine Göre Tasnif Edilenler	207.7	24.4	310.1	24.7	343.3	24.9	360.7	23.4	371.4	22.1
8. Makine ve Nakliye	304.5	35.7	385.8	30.7	383.6	27.9	392.8	25.5	360.3	21.4
9. Çeşitli Mamüller	61.7	7.2	101.1	8.1	113.4	8.2	134.2	8.7	135.4	8.1
Toplam	853.1	100.0	1,255.5	100.0	1,376.2	100.0	1,539.2	100.0	1,680.7	100.0

Kaynak: Devlet Planlama Örgütü

Table - 23 Foreign Trade by Countries

(Million US \$)

2009		2010		2011		2012		2013		Countries
İth. Imp.	İhr. Exp.	İth. Imp.	İhr. Exp.	İth. Imp.	İhr. Exp.	İth. Imp.	İhr. Exp.	İth. Imp.	İhr. Exp.	
923.4	38.5	1,137.4	44.7	1,165.7	61.3	1,235.4	56.9	1,155.3	62.9	1. Turkey
402.8	32.6	466.8	51.7	534.2	91.6	469.9	65.5	544.1	57.8	2. Other Countries
205.6	13.2	251.2	11.8	286.2	42.6	247.8	14.8	257.0	9.1	2.1. EU Countries
61.8	2.8	74.7	4.8	73.4	4.2	72.4	3.5	76.7	4.2	2.1.1. United Kingdom
143.8	10.4	176.5	7	212.8	38.4	175.4	11.3	180.3	4.9	2.1.2. Other EU Countries
49.5	7.6	69.0	31.1	83.5	36.9	78.6	39.8	86.2	38.5	2.2. Middle East Countries
46.4	0.1	44.1	0.2	59.3	0.0	58.1	0.7	90.8	0.8	2.3. Far East Countries
11.6	0.1	11.7	0.1	13.4	0.3	12.7	0.1	11.5	0.1	2.4. USA
89.7	11.6	90.8	8.5	91.8	11.8	72.7	10.1	98.6	9.3	2.5. Other Countries
1,326.2	71.1	1,604.2	96.2	1,699.9	152.9	1,705.3	122.4	1,699.4	121	Total

Source: State Planning Organization

Table - 24 Composition of Exports

(Million US \$)

2009	%	2010	%	2011	%	2012	%	2013	%	
20.9	29.4	36.8	38.2	46.6	30.5	43.4	35.5	39.1	32.4	1. Agricultural Products
14.0	19.7	27.2	28.2	31.4	20.6	26.3	21.5	24.0	19.9	1.1. Citrus
2.4	3.4	0.9	0.9	3.2	2.1	1.9	1.6	1.3	1.1	1.2. Potatoes
-	-	-	-	-	-	-	-	-	-	1.3. Live Animal
4.5	6.3	8.8	9.1	12.0	7.8	15.2	12.4	13.8	11.4	1.4. Other
45.4	63.8	52.1	54.0	92.0	60.2	68.3	55.8	71.1	58.9	2. Industrial Products
32.5	45.7	39.4	40.8	44.6	29.2	47.3	38.6	61.3	50.8	2.1. Processed Agricultural Goods
2.3	3.2	4.0	4.2	3.7	2.4	3.3	2.7	3.6	3.0	2.2. Clothing ¹
10.6	14.9	8.7	9.0	43.7	28.6	17.7	14.5	6.2	5.1	2.3. Other
4.8	6.8	7.5	7.8	14.3	9.4	10.7	8.7	10.5	8.7	3. Minerals
71.1	100.0	96.4	100.0	152.9	100.0	122.4	100.0	120.7	100.0	Total

¹ Included in other industrial products before 1993.

Source: State Planning Organization

Table - 25 Value of Imports by Commodity Groups

(Million US \$)

2009	%	2010	%	2011	%	2012	%	2013	%	
171.4	12.9	176.9	11.0	127.6	7.5	202.6	11.9	228.3	13.4	1. Food and Live Animals
80.1	6.1	86.7	5.4	106.6	6.3	95.5	5.6	103.3	6.1	2. Beverages and Tobacco
17.6	1.3	23.6	1.5	36.6	2.1	23.8	1.4	24.1	1.4	3. Crude Materials Inedible Other than Fuels
225.8	17.0	328.1	20.5	418.3	24.6	408.0	23.9	351.8	20.7	4. Mineral Fuels, Lubricants and Related Materials
10.4	0.8	10.7	0.7	26.5	1.6	13.1	0.8	12.6	0.8	5. Animal and Vegetable Oils and Fats
122.0	9.2	135.1	8.4	152.3	8.9	135.5	7.9	146.5	8.6	6. Chemicals
268.1	20.2	331.1	20.6	352.9	20.8	313.9	18.4	349.7	20.6	7. Manufactured Goods
										Classified Mainly by Materials
308.0	23.2	362.2	22.6	375.7	22.1	380.7	22.3	335.6	19.7	8. Machinery and Transport Equipment
122.8	9.3	149.8	9.3	103.4	6.1	132.2	7.8	147.5	8.7	9. Miscellaneous Goods
1,326.2	100.0	1,604.2	100.0	1,699.9	100.0	1,705.3	100.0	1,699.4	100.0	Total

Source: State Planning Organization

Tablo - 26 Konaklama Tesisleri ve Yatak Kapasitelerinin Dağılımı

		A: Tesis		B: Yatak		
		2004	2005	2006	2007	2008
Toplam	A....	128	133	139	142	130
	B....	12,222	13,145	13,755	16,180	15,784
1. Turistik Konaklama Tesisleri ¹	A....	116	121	127	130	119
	B....	11,926	12,839	13,453	15,832	15,440
2. Diğer Konaklama Tesisleri ²	A....	12	12	12	12	11
	B....	296	306	302	348	344
3. Doluluk Oranı		40.7	40.2	33.2	32.2	33.0

¹Otel, Otel- Apt. ve Diğerleri içermektedir.

²Pansiyon ve Misafirhaneleri içermektedir.

Kaynak: Turizm Planlama Dairesi, Devlet Planlama Örgütü

Tablo - 27 Turistik Tesislerde İstihdam Edilen Personel Sayısı

		A: Tesis		B: Yatak		
		2004	2005	2006	2007	2008
Toplam	A....	689	820	827	866	919
	B....	6,699	7,871	7,797	8,208	9,751
1. Turistik Konaklama Tesisleri ¹	A....	116	121	127	130	119
	B....	2,397	2,838	2,961	2,909	3,734
2. Diğer Konaklama Tesisleri ²	A....	12	12	12	12	11
	B....	36	38	25	26	24
3. Turistik Yan Tesisler	A....	407	509	515	537	627
	B....	1,951	2,264	2,313	2,341	2,304
3. Turistik Yan Tesisler ³	A....	135	157	156	165	137
	B....	416	471	400	408	326
5. Kumarhaneler	A....	19	21	17	22	25
	B....	1,899	2,260	2,098	2,524	3,363

¹Otel, Otel-Apt., ve Diğerleri içermektedir.

²Pansiyon ve Misafirhaneleri içermektedir..

³2008 yılından sonra sadece Restoranları kapsamaktadır.

Kaynak: Turizm Planlama Dairesi, Devlet Planlama Örgütü

Table - 26 Distribution of Accommodation Establishments and Bed Capacities

A: Establishment		B: Bed				
2009	2010	2011	2012	2013		
134	142	150	159	145A	Total
16,177	17,358	19,740	20,397	19,369B	
119	127	134	145	130A	1. Tourist Accommodation Establishments ¹
15,705	16,947	19,162	19,867	18,766B	
15	15	16	14	15A	2. Other Accommodation Establishments ²
472	411	578	530	603B	
34.4	35.9	41.4	44.1	47.9		3. Rate of Occupancy

¹Hotels, Hotel-Aparts & Others are covered.

²Guest-Houses are covered.

Source: Tourism Planning Office, State Planning Organization

Table - 27 Number of Employee in Tourist Establishments

A: Establishment		B: Bed				
2009	2010	2011	2012	2013		
663	761	927	961	906A	Total
9,224	10,965	12,518	12,053	12,817B	
119	127	134	145	130A	1. Tourist Accommodation Establishments ¹
3,321	3,738	4,433	4,735	5,369B	
15	15	16	14	15A	2. Other Accommodation Establishments ²
43	47	92	85	92B	
360	450	580	609	585A	3. Restaurants etc. ³
1,953	3,016	3,840	2,888	2,820B	
144	143	175	170	151A	4. Travel Agencies
340	346	410	376	453B	
25	26	22	23	25A	5. Casinos
3,567	3,818	3,743	3,969	4,083B	

¹Hotels, Hotel-Aparts, & Others are covered.

²Guest-Houses are covered.

³After 2008 only tourist restaurants are covered.

Source: Tourism Planning Office, State Planning Organization

Tablo - 28 Eğitim Sektöründe Gelişmeler

Öğretim Yılı School Year	Okul Öncesi Eğitim Pre-School				İlkokul Primary School			
	Okul ¹	Öğretmen	Öğrenci	Öğrenci/ Öğretmen	Okul	Öğretmen	Öğrenci	Öğrenci/ Öğretmen
	School ¹	Teacher	Pupil	Pupil/ Teacher	School	Teacher	Pupil	Pupil/ Teacher
2003 - 04	147	291	4,179	14.3	95	1,257	16,073	12.8
2004 - 05	136	435	4,732	10.9	95	1,270	16,327	12.9
2005 - 06	165	331	4,889	14.8	102	1,274	16,997	13.3
2006 - 07	168	294	5,280	18	94	1,275	17,541	13.8
2007 - 08	188	376	5,501	14.6	93	1,310	18,101	13.8
2008 - 09	193	371	5,494	14.8	95	1,601	17,906	11.2
2009 - 10	143	416	5,784	13.9	93	1,547	17,725	11.5
2010 - 11	145	487	6,229	12.8	94	1,567	18,053	12.6
2011 - 12	196	495	6,286	13.2	93	1,572	17,912	11.4
2012 - 13	215	516	6,500	12.6	93	1,624	17,983	11.1

¹Bünyesinde anasınıf olan ilkokullar dahildir.

² Bazı öğretmenler hem ortaokullarda, hem de liselerde görev yapmaktadırlar.

Tablo - 28 Eğitim Sektöründe Gelişmeler (Devam)

Öğretim Yılı School Year	Mesleki ve Teknik Lise Vocational and Technical High School				Fakülte ve Yüksek Okul University and Other Higher Education Institutions			
	Okul	Öğretmen	Öğrenci	Öğrenci/ Öğretmen	Okul	Öğrenci (KKTC'nde Okuyan)	Öğrenci (Yurtdışında Okuyan)	Toplam KKTC'li Öğrenci
	School	Teacher	Student	Student/ Teacher	School	Student (Studying in TRNC)	Student (Studying Abroad)	Total Students from TRNC
2003 - 04	13	440	2,260	5.1	8	10,536	2,150	12,686
2004 - 05	13	511	2,470	4.8	8	10,574	1,900	12,474
2005 - 06	13	462	2,265	4.9	9	10,807	1,650	12,457
2006 - 07	14	422	2,437	5.8	9	9,506	1,737	11,243
2007 - 08	11	405	2,388	5.9	9	10,313	1,815	12,128
2008 - 09	11	550	3,362	6.1	8	9,520	2,245	11,765
2009 - 10	11	559	3,315	5.9	8	10,476	1,214	11,690
2010 - 11	11	524	3,080	5.9	8	9,774	2,620	12,394
2011 - 12	11	518	2,877	5.6	7	10,096	2,620	12,716
2012 - 13	12	591	3,089	5.2	8	11883	2620	12145

Kaynak : Milli Eğitim Bakanlığı, Devlet Planlama Örgütü

Table - 28 Developments in Education Sector

Ortaokul Junior High School				Genel Lise General High School				
Okul	Öğretmen ²	Öğrenci	Öğrenci/ Öğretmen	Okul	Öğretmen	Öğrenci	Öğrenci/ Öğretmen	Öğretim Yılı
School	Teacher ²	Student	Student/ Teacher	School	Teacher	Student	Student/ Teacher	School Year
28	939	10,061	10.7	22	669	6,430	9.6	2003 - 04
28	1,014	9,712	9.6	22	694	6,133	8.8	2004 - 05
30	1,214	9,956	8.2	22	796	6,319	7.9	2005 - 06
31	1,052	9,920	9.4	22	670	5,995	8.9	2006 - 07
32	1,120	10,532	9.4	25	813	5,516	6.8	2007 - 08
33	1,106	10,571	9.6	24	925	7,141	7.7	2008 - 09
34	1,082	10,484	9.7	25	919	7,449	8.1	2009 - 10
36	1,108	10,487	9.5	27	973	7,786	8.0	2010 - 11
35	1,112	10,596	9.5	26	963	7,858	8.2	2011 - 12
35	1,092	10,495	9.6	26	981	8,158	8	2012 - 13

¹Including primary schools with pre-primary classes.

²Some teachers are teaching both in junior and general high schools.

Table - 28 Developments in Education Sector (Continued)

Özel Eğitim Special Education				Yaygın Eğitim Informal Education		
Okul	Öğretmen	Öğrenci	Öğrenci/ Öğretmen	Okul	Öğrenci	Öğretim Yılı
School	Teacher	Student	Student/ Teacher	School	Student	School Year
4	24	120	5.0	30	1,329	2003 - 04
4	24	89	3.7	30	1,803	2004 - 05
5	26	105	4.0	28	1,381	2005 - 06
6	42	373	8.9	34	1,270	2006 - 07
6	43	337	7.8	34	1,095	2007 - 08
6	51	458	9.0	31	1,378	2008 - 09
6	35	200	5.7	28	1,586	2009 - 10
6	53	419	7.9	54	1,652	2010 - 11
6	51	373	7.9	52	1,993	2011 - 12
6	51	376	7.4	57	2,292	2012 - 13

Source: Ministry of Education, State Planning Organization

Tablo - 29 KKTC'ndeki Üniversitelerde Okuyan Öğrencilerin Dağılımı

	A: KKTC	B: TC		C: 3. Ülkeler		D: Toplam	
		2003-04	2004-05	2005-06	2006-07	2007-08	
Genel Toplam	A....	9,922	10,371	10,586	9,239	9,886	
	B....	18,398	22,626	28,565	26,873	29,837	
	C....	2,285	2,476	2,714	2,667	3,298	
	D....	30,605	35,473	41,865	38,799	43,021	
Doğu Akdeniz Üniversitesi	A....	5,152	4,837	4,473	3,120	3,355	
	B....	7,723	7,952	9,084	7,967	8,966	
	C....	1,063	1,274	1,534	1,458	1,488	
	D....	13,938	14,063	15,091	12,545	13,809	
Girne Amerikan Üniversitesi	A....	443	530	529	484	554	
	B....	1,681	2,686	3,975	3,767	3,991	
	C....	230	269	394	339	454	
	D....	2,354	3,485	4,898	4,590	4,999	
Yakın Doğu Üniversitesi	A....	2,108	2,890	3,481	3,886	4,231	
	B....	5,168	6,075	6,777	6,581	7,251	
	C....	830	782	585	690	1,054	
	D....	8,106	9,747	10,843	11,157	12,536	
Lefke Avrupa Üniversitesi	A....	322	302	282	270	279	
	B....	1,164	1,802	2,609	2,658	2,693	
	C....	74	117	106	115	197	
	D....	1,560	2,221	2,997	3,043	3,169	
Uluslararası Kıbrıs Üniversitesi	A....	96	69	79	54	62	
	B....	1,189	2,036	3,283	3,180	3,790	
	C....	61	33	82	46	75	
	D....	1,346	2,138	3,444	3,280	3,927	
Anadolu Üniversitesi ¹	A....	1,801	1,743	1,727	1,397	1,352	
	B....	1,473	2,075	2,488	2,093	2,225	
	C....	27	1	1	-	-	
	D....	3,301	3,819	4,216	3,490	3,577	
ODTÜ Kuzey Kıbrıs Kampusu	A....	-	-	15	28	53	
	B....	-	-	349	627	921	
	C....	-	-	12	19	30	
	D....	-	-	376	674	1,004	
İstanbul Teknik Üniversitesi Kuzey Kıbrıs Kampusu	A....	-	-	-	-	-	
	B....	-	-	-	-	-	
	C....	-	-	-	-	-	
	D....	-	-	-	-	-	
Akdeniz Karpaz Üniversitesi	A....	-	-	-	-	-	
	B....	-	-	-	-	-	
	C....	-	-	-	-	-	
	D....	-	-	-	-	-	

¹ Dondurulmuş kayıtlar dahildir.

Kaynak : Üniversiteler, Devlet Planlama Örgütü

Table - 29 Students in Higher Education Institutions in TRNC

A: TRNC	B: TR	C: 3rd Countries	D: Total			
2008-09	2009-10	2010-11	2011-12	2012-13		
9,310	8,356	12,666	12,297	14,118A	Grand Total
33,288	29,191	24,319	32,309	35,966B	
3,036	2,884	4,248	9,090	10,168C	
45,634	40,431	41,230	53,698	60,252D	
2,502	2,317	2,236	2,515	2,712A	Eastern Mediterranean University
9,451	8,213	7,318	7,134	6,986B	
1,302	1,176	1,379	3,023	3,938C	
13,255	11,706	10,930	12,672	13,636D	
444	484	591	710	1,086A	Girne American University
4,115	3,776	4,013	4,894	5,572B	
377	344	865	1,171	1,818C	
4,936	4,604	5,469	6,775	8,476D	
4,395	3,668	4,573	6,703	5,815A	Near East University
8,963	6,903	7,914	10,397	9,581B	
912	675	1,019	2,942	1,459C	
14,270	11,246	13,506	20,042	16,855D	
218	202	181	310	360A	Lefke European University
3,058	2,566	1,863	2,036	2,361B	
253	350	317	392	582C	
3,529	3,118	2,361	2,738	3,303D	
65	118	3,714	626	849A	Cyprus International University
4,136	4,095	230	4,235	4,902B	
147	281	594	1,467	2,221C	
4,348	4,494	4,538	6,328	7,972D	
1,628	1,482	1,281	1,314	3,123A	Anadolu University ¹
2,425	2,343	1,645	2,136	4,814B	
-	2	-	1	8C	
4,053	3,827	2,926	3,451	7,945D	
58	85	90	119	138A	METU North Cyprus Campus
1,140	1,295	1,336	1,436	1,642B	
45	56	74	95	122C	
1,243	1,436	1,500	1,650	1,902D	
-	-	-	1	2A	Istanbul Technical University
-	-	-	41	93B	North Cyprus Campus
-	-	-	-	-C	
-	-	-	42	95D	
-	-	-	-	33A	Mediterranean Karpasia University
-	-	-	-	15B	
-	-	-	-	20C	
-	-	-	-	68D	

¹Students that freeze a semester are included.

Source: Universities, State Planning Organization

Tablo - 30 Sağlık Personeli

		A: Kamu	B: Özel	C: Toplam		
		2004	2005	2006	2007	2008
Yatak Sayısı	A....	963	970	1,022	1,022	971
	B....	328	328	346	358	240
	C....	1,291	1,298	1,368	1,380	1,211
Uzman Hekim	A....	196	205	203	216	228
	B....	172	191	216	236	256
	C....	368	396	419	452	484
Asistan Hekim	A....	20	21	18	11	16
Pratisyen Hekim	A....	20	19	25	23	23
	B....	34	34	34	32	50
	C....	54	53	59	55	73
Diş Hekimi	A....	24	24	23	22	21
	B....	91	100	111	108	119
	C....	115	124	134	130	140
Eczacı	A....	20	19	16	18	17
	B....	149	147	148	152	159
	C....	169	166	164	170	176
Hemşire	A....	521	524	637	650	663
Ebe	A....	18	18	16	23	10

Kaynak: Sağlık Bakanlığı, Devlet Planlama Örgütü

Tablo - 31 Tüketici Fiyatları Endeksi Değişim Oranları (Aralık Bazına Göre)**Table - 31 Changes in Retail Price Index (Based on December)**

Aylar Months	2004	2005	2006	2007	2008	2009	2010	2011	2012	2013
Ocak January	0.7	-0.9	1.0	1.3	1.6	-0.1	-0.3	1.4	-0.7	1.0
Şubat February	0.3	-0.9	0.7	2.0	2.2	0.1	-0.3	2.1	-1.0	0.5
Mart Mrch	1.8	-0.9	2.5	3.5	3.8	1.1	0.0	3.9	0.0	0.7
Nisan April	2.4	0.5	4.2	4.2	6.3	1.2	0.7	4.9	1.8	1.5
Mayıs May	4.6	-0.2	6.4	4.3	7.9	2.5	0.3	6.5	1.7	1.8
Haziran June	4.2	-0.4	8.5	3.4	9.8	3.2	0.3	6.0	0.7	3.3
Temmuz July	4.2	-0.2	10.2	3.6	11.5	0.8	0.9	7.2	-0.3	3.2
Ağustos August	6.5	0.5	12.6	5.9	11.3	2.6	1.9	9.5	0.8	4.2
Eylül September	8.4	2.0	15.9	7.7	14.3	3.3	2.6	10.4	2.6	6.3
Ekim October	10.3	2.5	18.6	9.3	15.6	4.9	3.6	11.9	3.5	7.9
Kasım November	10.9	2.3	19.0	9.0	16.4	6.0	3.5	13.9	3.6	8.3
Aralık December	11.6	2.7	19.2	9.4	14.5	5.7	3.3	14.7	3.6	10.2

Kaynak: Devlet Planlama Örgütü

Source: State Planning Organization

Table - 30 Health Personnel

A: Public	B: Private	C: Total				
2009	2010	2011	2012	2013		
1,015	1,026	989	1,007	1,007A	Number of Beds
290	590	303	303	303B	
1,305	1,616	1,292	1,310	1,310C	
218	231	228	223	226A	Specialist
277	249	283	318	338B	
495	480	511	541	564C	
25	20	18	18	18A	Asistant Doctor
24	25	6	6	6A	Practitioner
40	46	38	38	38B	
64	71	44	44	44C	
22	22	21	21	22A	Dentist
122	111	104	115	126B	
144	133	125	136	148C	
15	15	14	14	14A	Pharmacist
163	167	164	177	187B	
178	182	178	191	201C	
680	665	664	680	692A	Nurse
19	23	25	25	24A	Mid-Wife

Source: Ministry of Health, State Planning Organization

Tablo - 32 Asgari Ücret Gelişmeleri**Table - 32 Changes in Minimum Wage**

Yıllar Years	Asgari Ücret (YTL) Minimum Wages (YTL)	Uygulama Tarihi	Date of Coming into Action
2004	550.0	1 Mart 2004	1 March 2004
	627.0	1 Temmuz 2004	1 July 2004
2005	720.0	1 Haziran 2005	1 June 2005
2006	780.0	1 Ocak 2006	1 January 2006
	860.0	1 Ağustos 2006	1 August 2006
2007	950.0	1 Şubat 2007	1 February 2007
2008	1,060.0	1 Ocak 2008	1 January 2008
	1,190.0	1 Eylül 2008	1 September 2008
2009	1,237.0	1 Ekim 2009	1 October 2009
2011	1,300.0	1 Ocak 2011	1 January 2011
2013	1,415.0	1 Ocak 2006	1 January 2013

Kaynak: Devlet Planlama Örgütü

Source: State Planning Organization

Tablo - 33 Akaryakıt Satışı

Ürünler	(MTon)				
	2004	2005	2006	2007	2008
1. Benzin (Süper + Kurşunsuz)	51,187	55,714	59,877	67,049	71,538
2. Gazyağı	946	814	1,025	1,717	1,093
3. Motorin	118,224	155,573	148,023	130,225	125,921
4. Jet A-1	12,371	15,196	21,409	23,923	22,656
5. LPG	16,475	16,541	17,784	19,064	19,064
6. Madeni Yağ	916	1,068	1,269	895	895
Toplam	200,119	244,906	249,387	242,873	242,873

Kaynak: K.T.Petrolleri Ltd. Şti., Altınbaş Petrol Ltd. Şti., Devlet Planlama Örgütü

Tablo - 34 Yaratılan Katma Değere Göre İstihdam**Table -34 Employment According to Value Added**

Sektörler	2004	%	2005	%	Sectors
1. Tarım	13,765.0	13	13,077.0	12	1. Agriculture
2. Sanayi	9,593.0	9	9,848.0	9	2. Industry
2.1. Taşocakçılığı	1,343.0	1	1,417.0	1	2.1. Quarrying
2.2. İmalat Sanayii	6,777.0	7	6,903.0	6	2.2. Manufacturing
2.3. Elektrik-Su	1,473.0	1	1,528.0	1	2.3. Electricity - Water
3. İnşaat	20,205.0	19	21,160.0	19	3. Construction
4. Ticaret-Turizm	12,505.0	12	13,474.0	12	4. Trade-Tourism
4.1. Toptan ve Perakende Ticaret	7,568.0	7	8,420.0	8	4.1. Wholesale and Retail Trade
4.2. Otelcilik ve Lokantacılık	4,937.0	5	5,054.0	5	4.2. Hotels and Restaurants
5. Ulaştırma-Haberleşme	9,067.0	9	9,952.0	9	5. Transport-Communication
6. Mali Müesseseler	2,509.0	2	2,583.0	2	6. Financial Institutions
7. Serbest Meslek ve Hizmetler	17,914.0	17	18,735.0	17	7. Business and Personal Services
8. Kamu Hizmetleri ¹	19,315.0	18	20,261.0	19	8. Public Services1
Toplam İstihdam	104,873.0	100	109,090.0	100	Total Employment

¹ KİT ve Belediyeler dahildir.
Kaynak: Devlet Planlama Örgütü

¹ SEE and Municipalities are included.
Source: State Planning Organization

Table - 33 Sale of Oil Products

(MTon)

2009	2010	2011	2012	2013	Products
75,920	80,368	79,553	79,166	80,749	1. Benzine (Super + Unleaded)
882	724	874	844	807	2. Kerosene
119,426	131,800	124,579	118,583	116,673	3. Diesel Fuel
22,172	22,218	24,187	28,202	27,312	5. Jet A-1
20,219	19,606	23,268	24,855	24,173	6. LPG
466	185	536	414	118	7. Motor Oil
239,085	254,901	252,064	252,064	249,832	Total

Source: Cyprus Turkish Petroleum Ltd. Company, Altınbaş Petroleum Ltd. Company, State Planning Organization

Tablo - 35 Hanehalkı İşgücü Anketine Göre İstihdam¹**Table - 35 Employment According To Household Labour Force Survey¹**

Sektörler	2004	%	2005	%	2006	%	2007	%	2008	%	Sectors
1. Tarım, Ormancılık, Avcılık ve Balıkçılık	7,278	8.4	4,681	5.5	4,378	4.8	3,170	3.5	3,171	3.5	1. Agriculture, Forestry, Hunting, Fishing
2. Madencilik ve Taşocakçılığı	114	0.1	144	0.2	113	0.1	115	0.1	113	0.1	2. Mining, Quarrying
3. İmalat Sanayi	9,490	10.9	8,440	9.9	8,006	8.7	7,679	8.5	7,171	7.9	3. Manufacturing
4. Elektrik, Gaz, Su	607	0.7	641	0.7	644	0.7	1,103	1.2	860	0.9	4. Electricity, Gas, Water
5. İnşaat ve Bayındırlık İşleri	8,079	9.3	8,375	9.8	9,590	10.4	9,664	10.8	10,491	11.5	5. Construction, Public Works
6. Toptan ve Perakende Ticaret	14,130	16.3	14,563	17	16,757	18.3	17,340	19.3	16,123	17.7	6. Wholesale-Retail Trade
7. Lokanta ve Oteller	5,039	5.8	4,942	5.8	5,755	6.3	5,493	6.1	5,941	6.5	7. Restaurants, Hotels
8. Ulaştırma, Haberleşme ve Depolama	5,289	6.1	5,378	6.3	5,250	5.7	5,017	5.6	6,082	6.7	8. Transport, Communication, Storage
9. Mali Aracı Kuruluşlar	3,403	3.9	3,044	3.5	3,541	3.9	3,142	3.5	3,638	4.0	9. Financial Institutions
10. Gayrimenkul Kiralama	3,595	4.1	4,261	5	3,319	3.6	4,120	4.6	3,004	3.3	10. Property Renting
11. Kamu Yönetimi	13,309	15.3	14,346	16.8	14,969	16.3	14,344	16	14,854	16.3	11. Public Administration
12. Eğitim Hizmetleri	8,576	9.9	9,120	10.6	9,743	10.6	9,479	10.6	9,715	10.6	12. Educational Services
13. Sağlık İşleri	2,545	2.9	2,470	2.9	2,931	3.2	3,013	3.4	2,907	3.2	13. Health Services
14. Diğer Toplumsal Hizmetler	5,460	6.3	5,178	6	6,821	7.4	6,108	6.8	7,151	7.8	14. Other Community Services
Toplam	86,914	100.0	85,583	100.0	91,815	100.0	89,787	100.0	91,223	100.0	Total

¹Sektörlerin toplamı yuvarlamadan dolayı genel toplamı vermeyebilir.

¹Sectoral figures may not add up to the general total due to rounding.

Tablo - 35 Hanehalkı İşgücü Anketine Göre İstihdam¹**Table - 35 Employment According To Household Labour Force Survey¹**

Sektörler	2009	%	2010	%	2011	%	2012	%	2013	%	Sectors
1. Tarım, Ormancılık, Avcılık ve Balıkçılık	4,432	4.8	5,300	5.7	3,377	3.61	3,892	4.03	4,901	5.01	1. Agriculture, Forestry, Hunting, Fishing
2. Madencilik ve Taşocakçılığı	106	0.1	73	0.1	39	0.04	179	0.19	157	0.16	2. Mining, Quarrying
3. İmalat Sanayi	7,312	8	8,393	9	6,636	7.1	6,632	6.87	5,961	6.09	3. Manufacturing
4. Elektrik, Gaz, Su	952	1	1,051	1.1	1,286	1.38	1,356	1.4	1,421	1.45	4. Electricity, Gas, Water
5. İnşaat ve Bayındırlık İşleri	9,204	10.1	7,746	8.3	6,496	6.95	7,224	7.48	7,139	7.29	5. Construction, Public Works
6. Toptan ve Perakende Ticaret	15,609	17	16,547	17.7	17,256	18.46	16,141	16.72	16,689	17.05	6. Wholesale-Retail Trade
7. Lokanta ve Oteller	7,316	8	7,470	8	7,553	8.08	9,518	9.86	8,007	8.18	7. Restaurants, Hotels
8. Ulaştırma, Haberleşme ve Depolama	4,872	5.3	5,026	5.4	5,282	5.65	5,156	5.34	6,133	6.27	8. Transport, Communication, Storage
9. Mali Aracı Kuruluşlar	3,777	4.1	3,498	3.7	3,560	3.81	3,312	4.43	3,404	3.48	9. Financial Institutions
10. Gayrimenkul Kiralama	4,180	4.6	4,686	5	5,481	5.86	6,714	6.95	5,931	6.06	10. Property Renting
11. Kamu Yönetimi	15,417	16.8	15,669	16.8	17,428	18.65	15,775	16.34	18,559	18.96	11. Public Administration
12. Eğitim Hizmetleri	10,182	11.1	9,149	9.8	9,967	10.66	10,028	10.39	10,040	10.26	12. Educational Services
13. Sağlık İşleri	2,533	2.8	2,481	2.7	3,020	3.23	3,487	3.61	2,838	2.9	13. Health Services
14. Diğer Toplumsal Hizmetler	5,658	6.2	6,408	6.9	6,086	6.51	7,125	7.38	6,688	6.83	14. Other Community Services
Toplam	91,550	100.0	93,498	100.0	93,470	100.0	96,539	100.0	97,868	100.0	Total

¹Sektörlerin toplamı yuvarlamadan dolayı genel toplamı vermeyebilir.

¹Sectoral figures may not add up to the general total due to rounding.

Kaynak: Devlet Planlama Örgütü

Source: State Planning Organization